



HARTEL COMMERCIAL REAL ESTATE

Strategic Real Estate Services

**15 Long Hill Road - Unit 4
Adjacent to Rte 28A
Bourne, MA**



- * **1,218± SF INDUSTRIAL BAY - CURRENTLY TENANT AT WILL OCCUPIES SPACE**
- * **17.8' OVERHEAD POWER DOOR / LOFT STORAGE / FRONT F& REAR ACCESS**
 - * **EASY ACCESS TO RTES 28A & MACARTHUR BLVD**

Offered for \$215,000



HARTEL COMMERCIAL REAL ESTATE

230 Jones Road
Suite 6
Falmouth MA 02540

40 Willard Street
Suite 207
Quincy MA 02169

Greg Hartel
617-256-3169
Greg@HartelRealty.com

Jody Shaw
508-566-3556
Jody@HartelRealty.com

Main Office
508-444-0172
www.HartelRealty.com



Property Detail

- 1,218± SF Renovated Available Space
- Offered for \$215,000
- Tenant at Will currently occupies space
- Separate Private Entrance and Rear Exit
- Large Open Space with 17.8' Overhead Power Door
- Bath in Rear with Storage in Loft Area
- Parking on-site
- FY 2019 Assessment: \$ 133,900
- FY 2019 Taxes: \$1,419
- * Zoned - B2 Business 2





HARTEL COMMERCIAL REAL ESTATE

Strategic Real Estate Services



Satellite View



HARTEL COMMERCIAL REAL ESTATE

230 Jones Road
Suite 6
Falmouth MA 02540

40 Willard Street
Suite 207
Quincy MA 02169

Greg Hartel
617-256-3169
Greg@HartelRealty.com

Jody Shaw
508-566-3556
Jody@HartelRealty.com

Main Office
508-444-0172
www.HartelRealty.com



HARTEL COMMERCIAL REAL ESTATE

Strategic Real Estate Services



Neighborhood View



HARTEL COMMERCIAL REAL ESTATE

230 Jones Road
Suite 6
Falmouth MA 02540

40 Willard Street
Suite 207
Quincy MA 02169

Greg Hartel
617-256-3169
Greg@HartelRealty.com

Jody Shaw
508-566-3556
Jody@HartelRealty.com

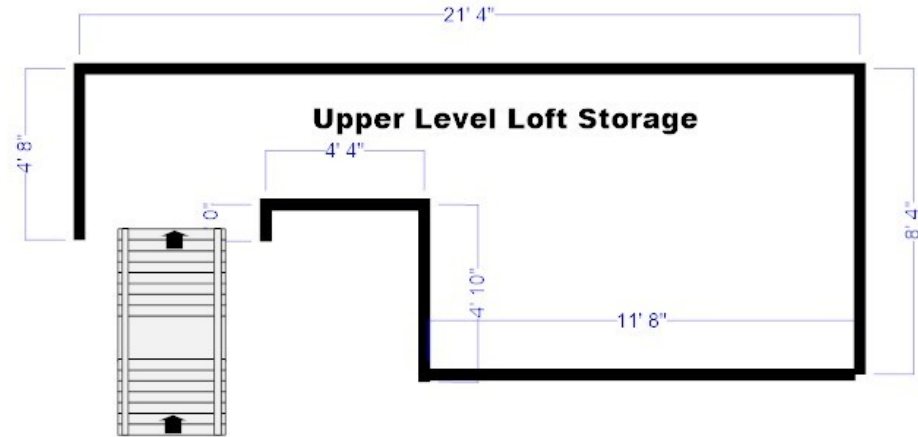
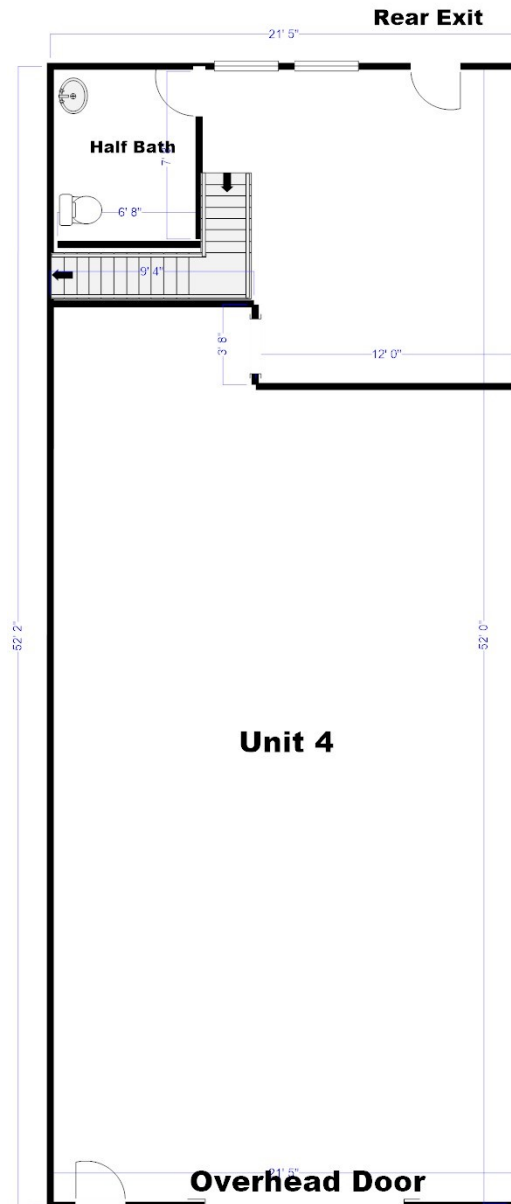
Main Office
508-444-0172
www.HartelRealty.com



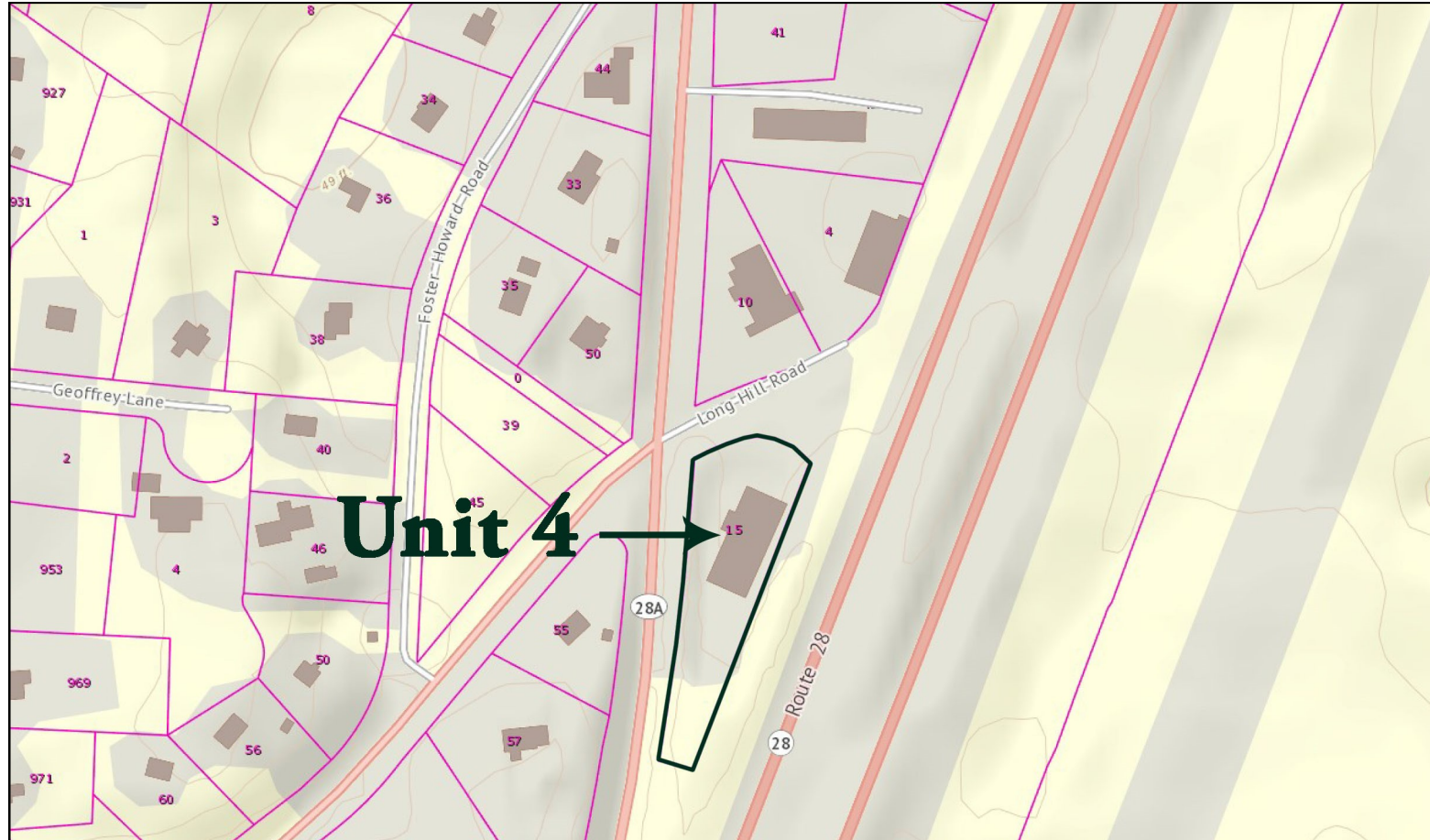
HARTEL COMMERCIAL REAL ESTATE

Strategic Real Estate Services

FLOORPLAN



Assessor Map





HARTEL COMMERCIAL REAL ESTATE

Strategic Real Estate Services

15 Long Hill Road - Unit 4 - Bourne

The 15 Long Hill location is in an area of mostly industrial and retail uses as well as residential. There are restaurants, residential, commercial and industrial buildings surrounding this space. Adjacent to the space is Route 28A, a heavily traveled year round road. This site is Business 2 zoned. Easy access to Rte 28, MacArthur Blvd gives this location added advantage for any allowed use.

