



# HARTEL COMMERCIAL REAL ESTATE

*Strategic Business Services*

---



**NEW PRICE - Offered at \$400,000**

*8 Waterhouse Road  
Bourne, MA*

**ATTENTION TO EVERY DETAIL**

**Meticulous Upscale Property**

---

Details ~

9 Total Rooms

Zoned VB

.08 Acre

2,292 SF

1 Full ~ 1 Half Bath

---

*Exclusively Offered by:*



HARTEL COMMERCIAL REAL ESTATE

230 Jones Road  
Suite 6  
Falmouth MA 02540

40 Willard Street  
Suite 207  
QuincyMA 02169

Greg Hartel  
617-256-3169  
Greg@HartelRealty.com

Jody Shaw  
508-566-3556  
Jody@HartelRealty.com

Main Office  
508-444-0172  
www.HartelRealty.com



# HARTEL COMMERCIAL REAL ESTATE

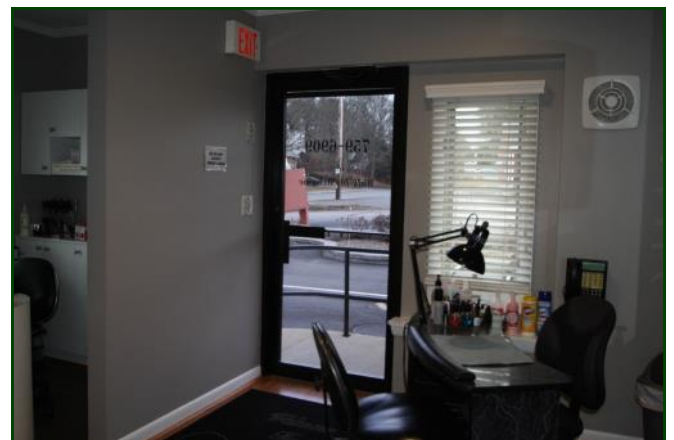
*Strategic Business Services*

---

## *8 Waterhouse Road - Property Details*

This property is located at the junction of Waterhouse Road, County Road, Shore Road, Perry Avenue, Sandwich Road and Trowbridge Road. Excellent Visibility in a heavily traveled area. According to the MA DOT, Traffic counts on adjacent Trowbridge Road (the only road counted) are 8,679/Cars/Day as of 2018.

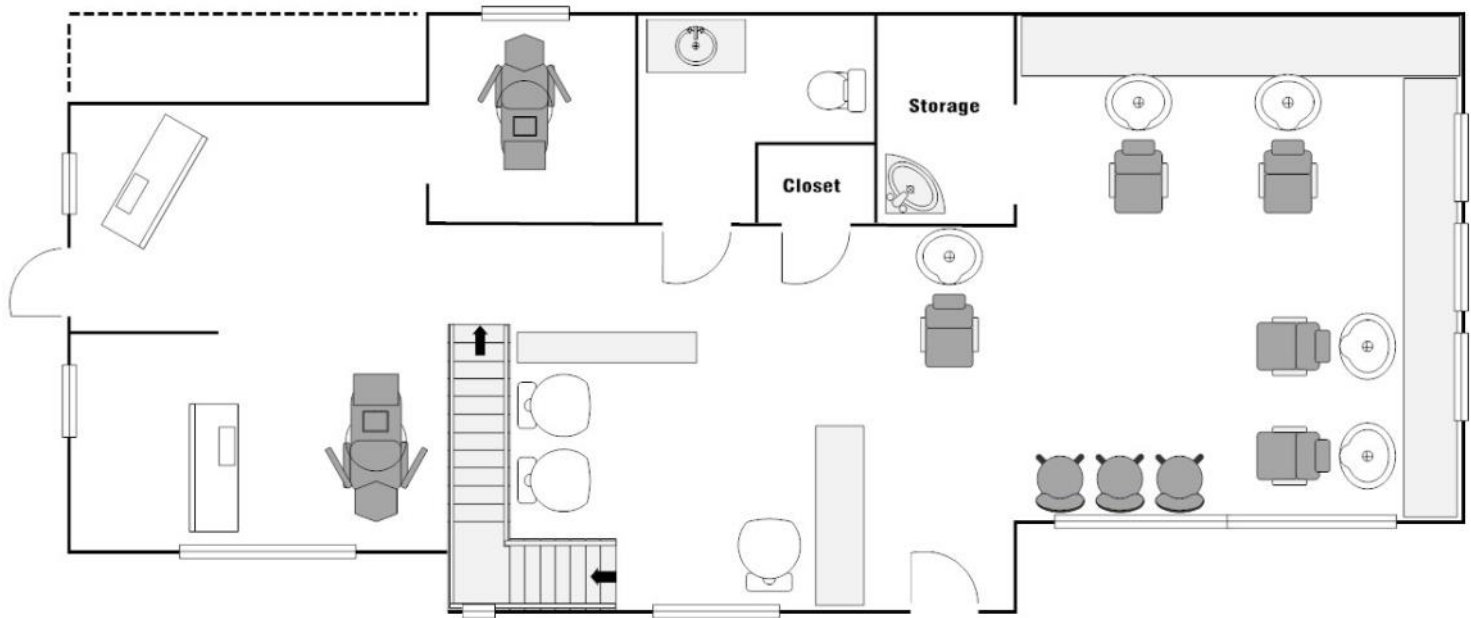
Meticulous, clean , exquisite describe this commercial property. It has all the attention to detail surrounding it inside and out. The building is currently home to the busy Mama's and Papa's Salon since 1988 and has been well kept and updated throughout. It has a full finished lower level and upper level. Must be seen to see the excellent condition this property has. The well established business is also For Sale (\$55,000) to interested parties. Inventory list available upon serious inquiries.



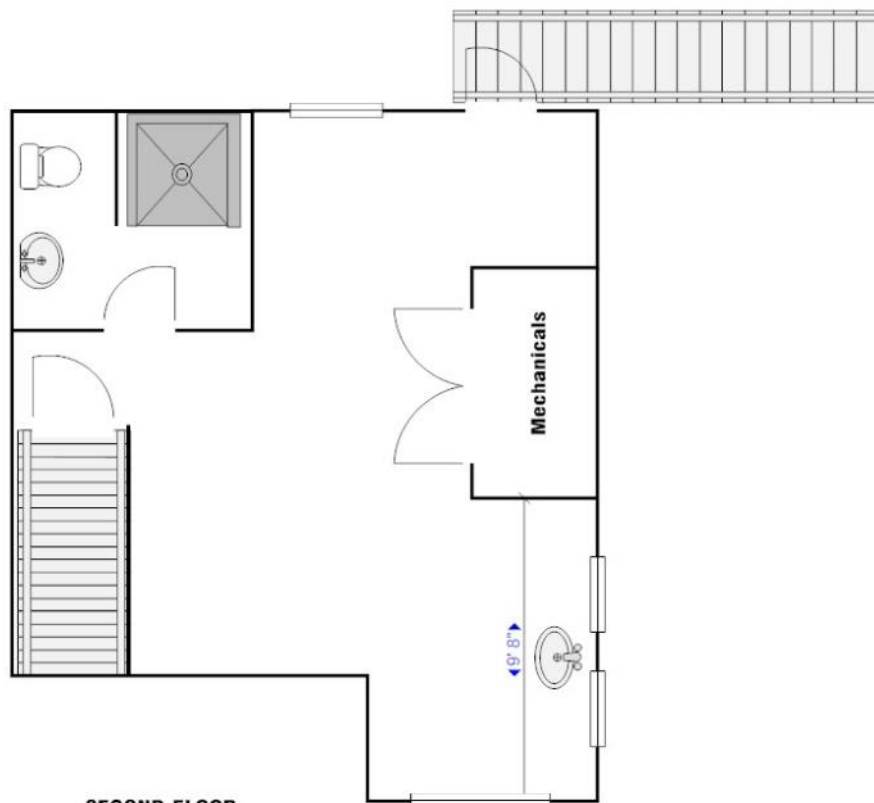


# HARTEL COMMERCIAL REAL ESTATE

*Strategic Business Services*



**FIRST FLOOR**



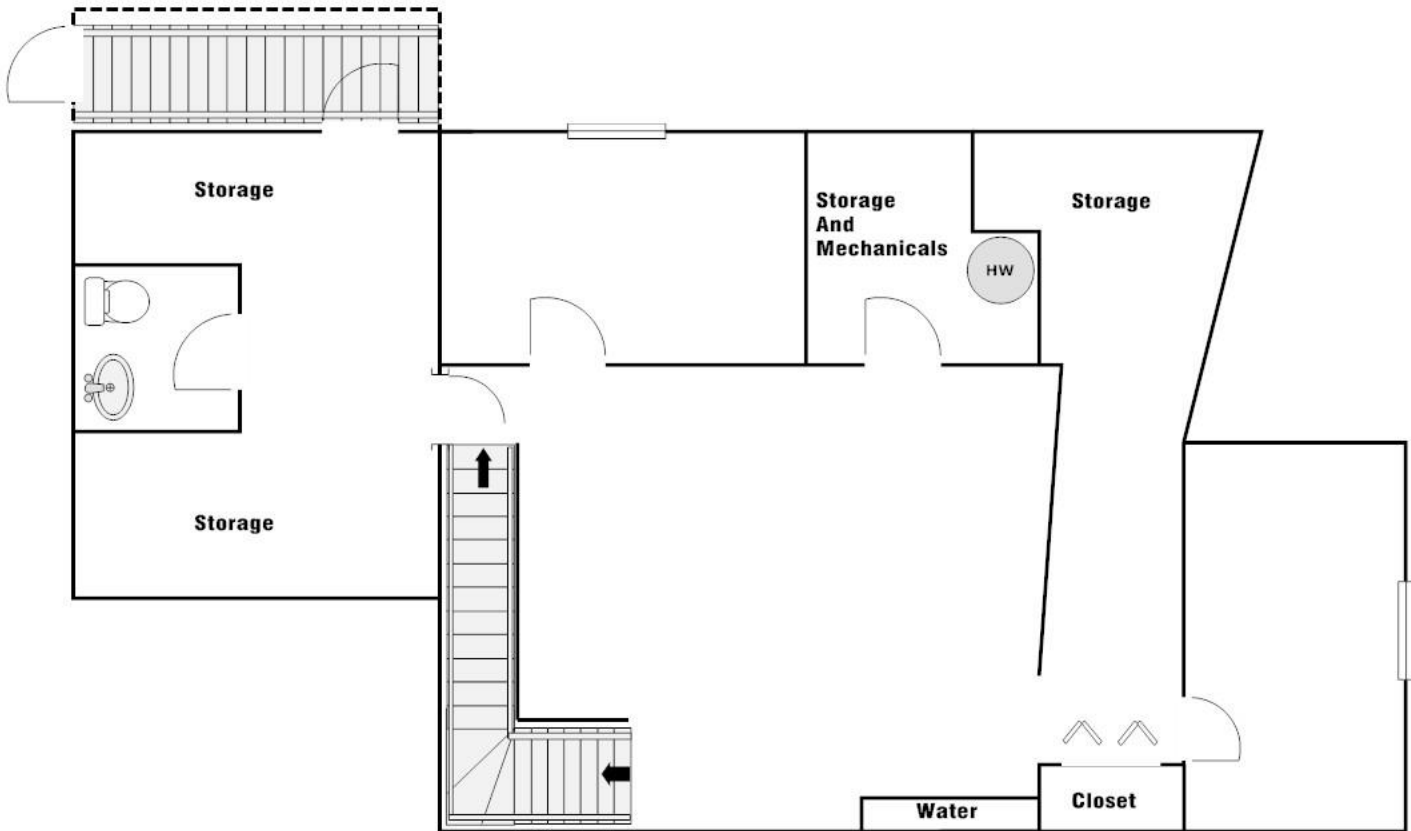
**SECOND FLOOR**



# HARTEL COMMERCIAL REAL ESTATE

*Strategic Business Services*

---



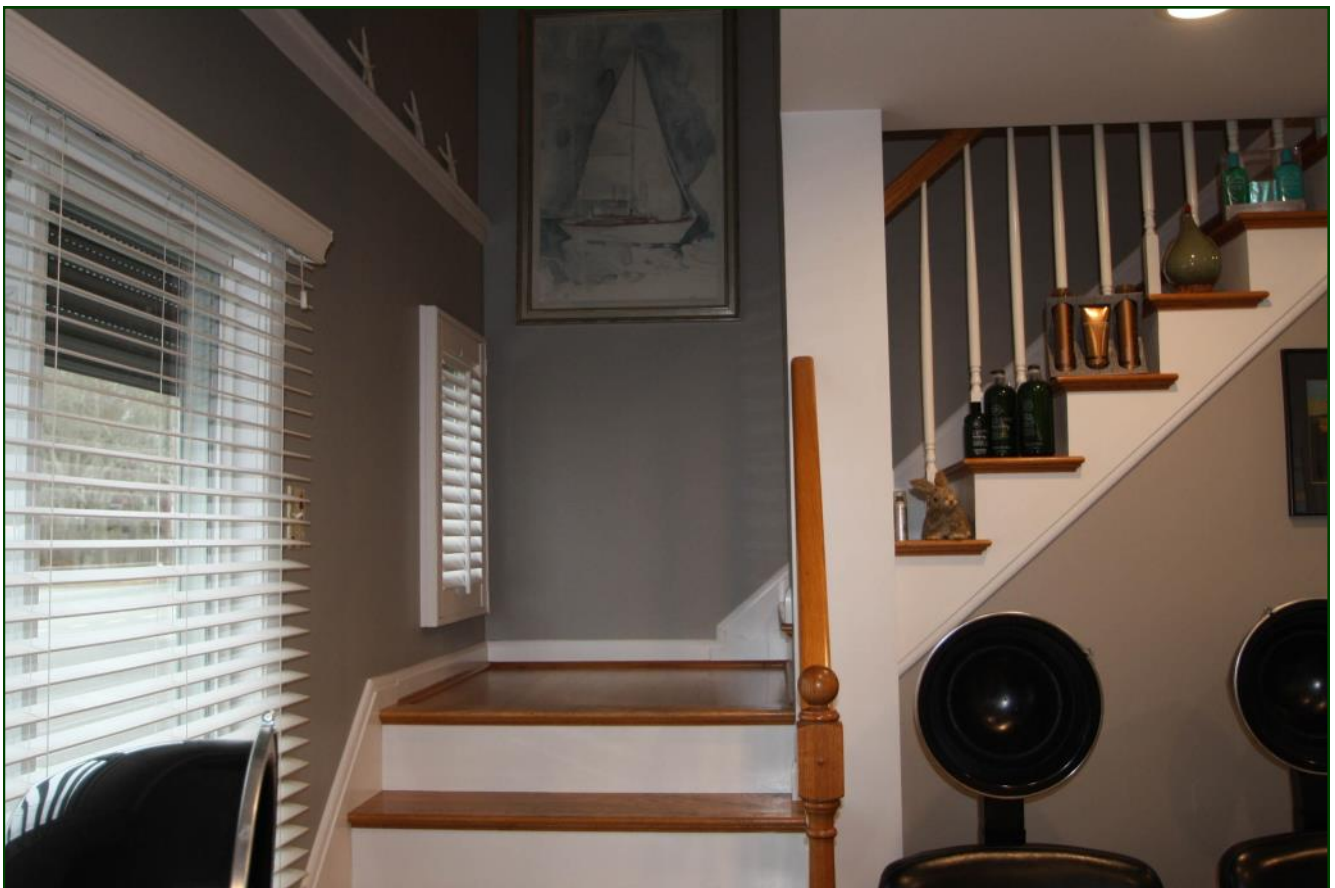
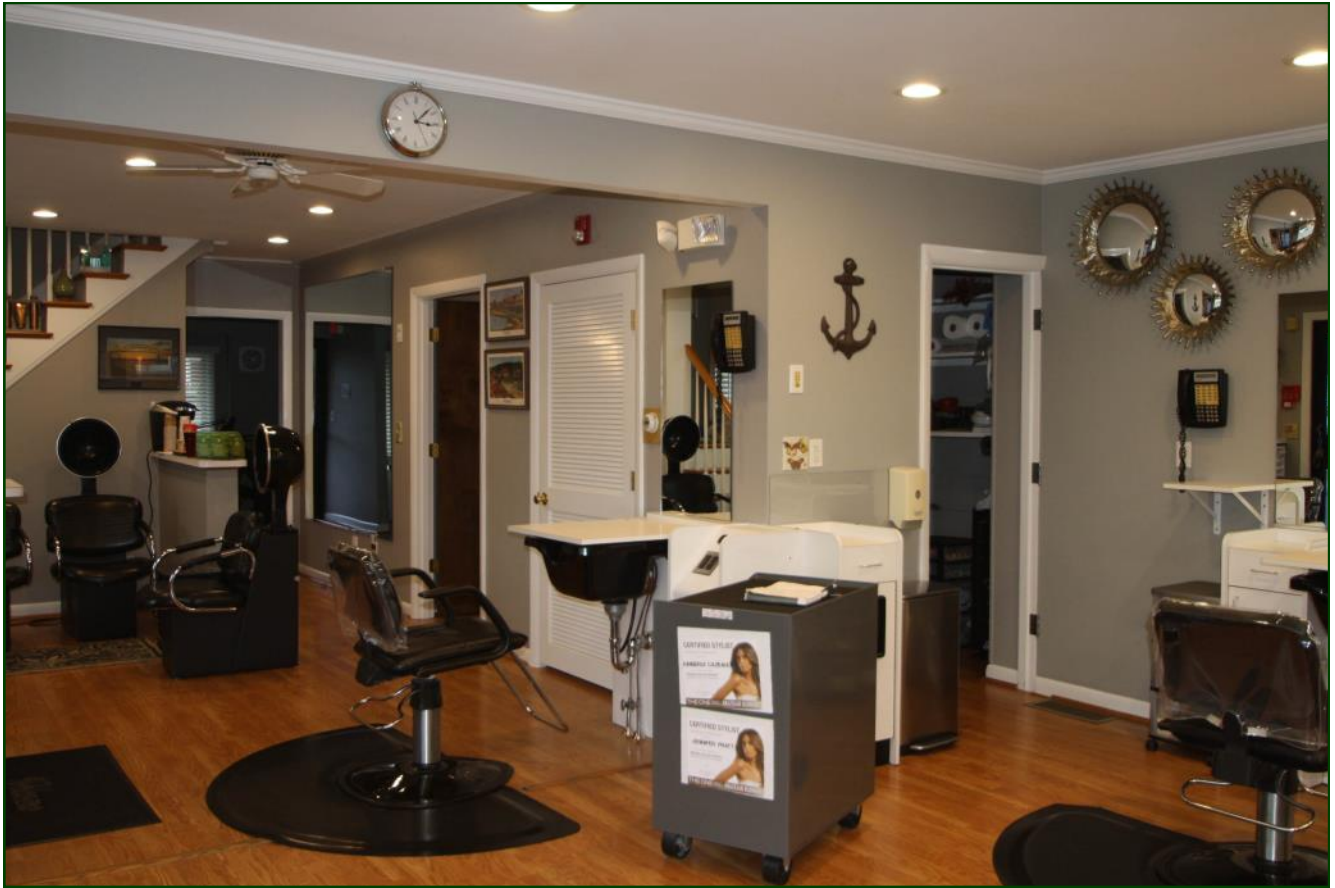
**LOWER LEVEL**



## *8 Waterhouse Road - Interior Photographs*

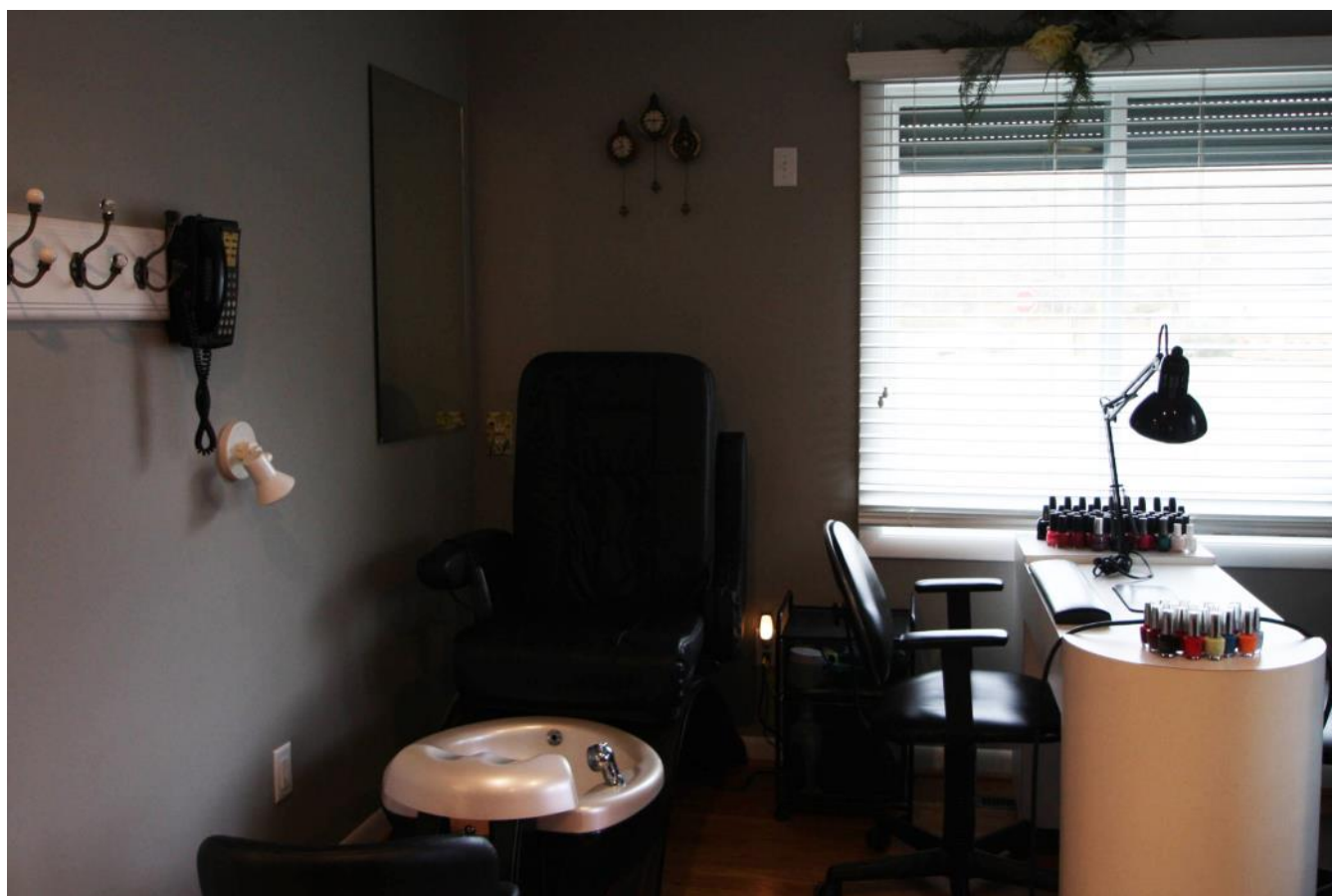
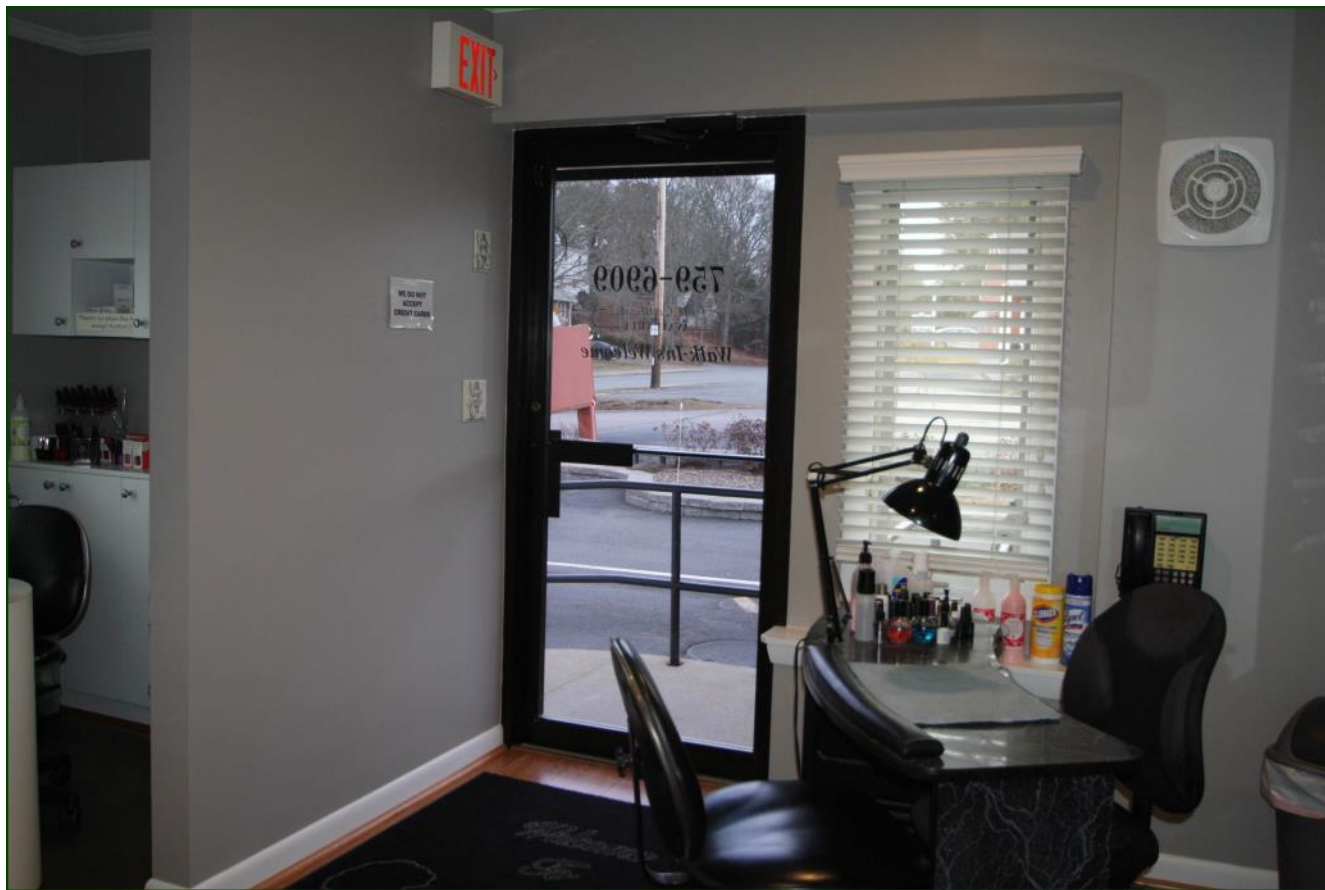


## *8 Waterhouse Road - Interior Photographs*





## *8 Waterhouse Road - Interior Photographs*



*8 Waterhouse Road - Upper Level Photographs*





*8 Waterhouse Road - Lower Level Photographs*



*8 Waterhouse Road - Lower Level & Deck Photographs*



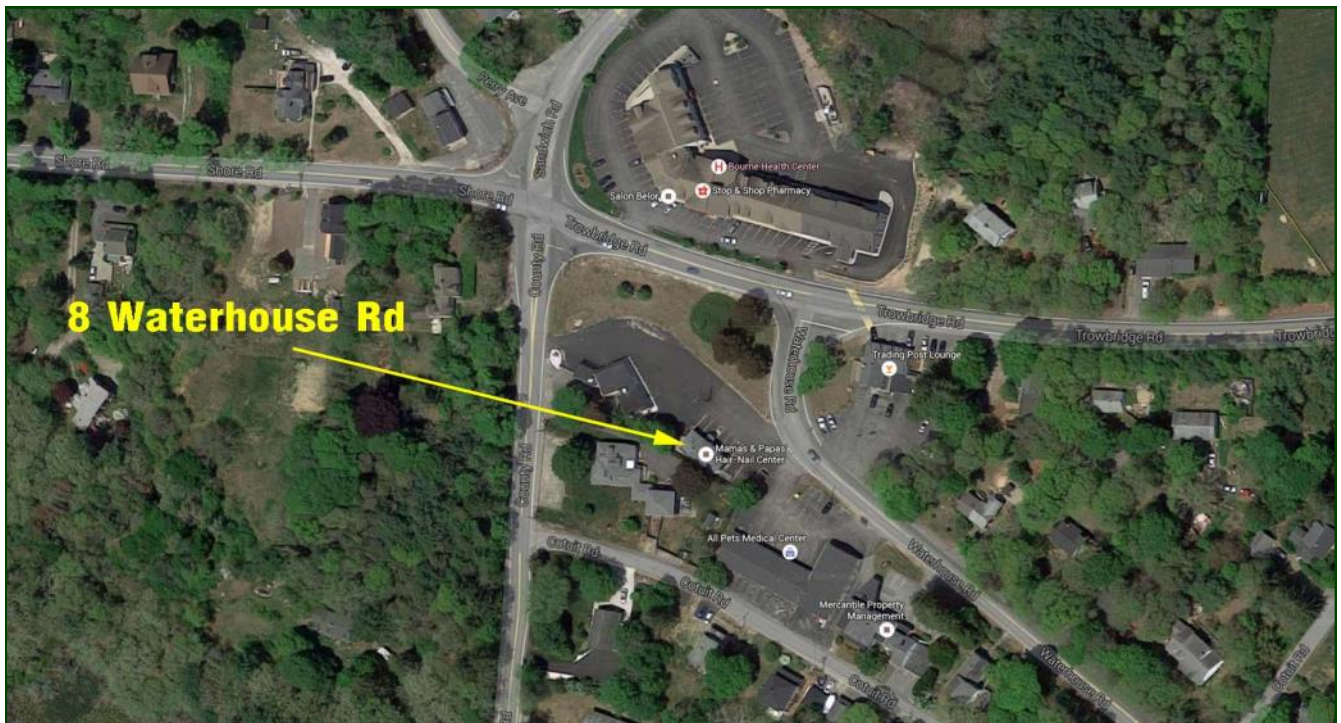
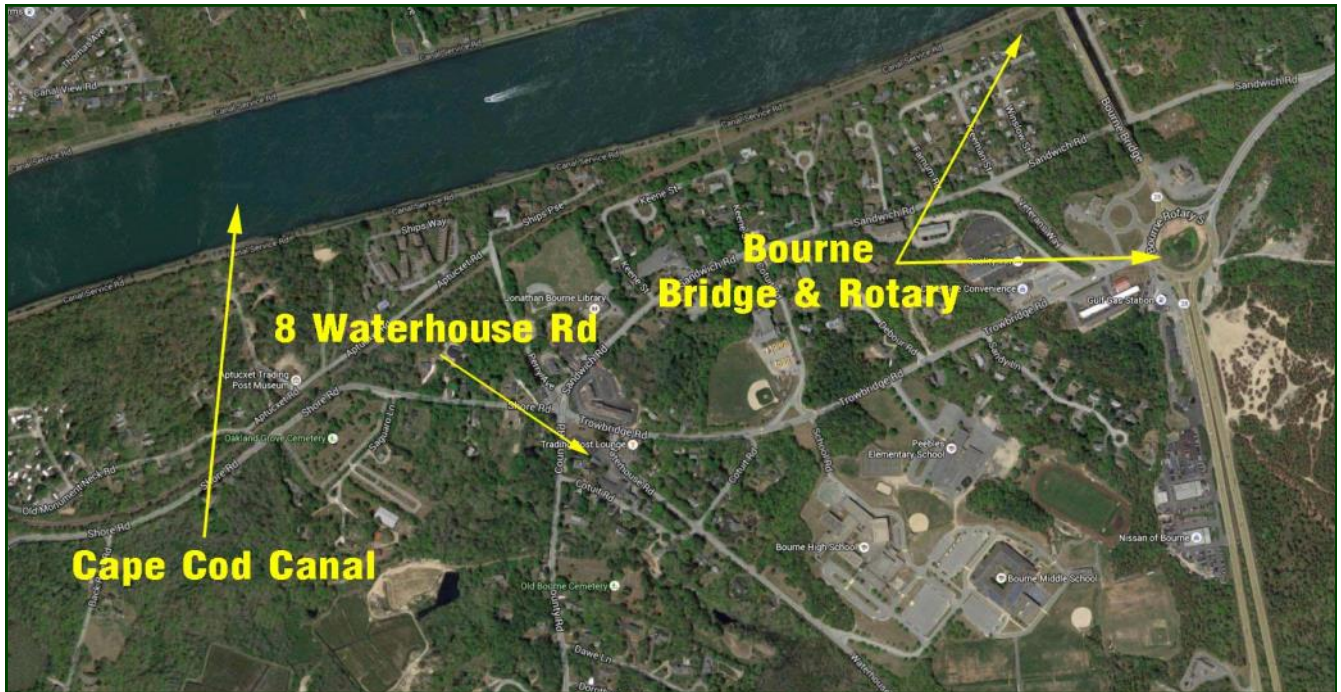


## *8 Waterhouse Road - Photographs*





# 8 Waterhouse Road Maps



# 8 Waterhouse Road Maps

