



HARTEL COMMERCIAL REAL ESTATE

Falmouth ~ Quincy

*108 Davis Straits aka Route 28
Junction of Rte 28 and Jones Rd
Falmouth, MA*



HARTEL COMMERCIAL REAL ESTATE

Strategic Real Estate Services

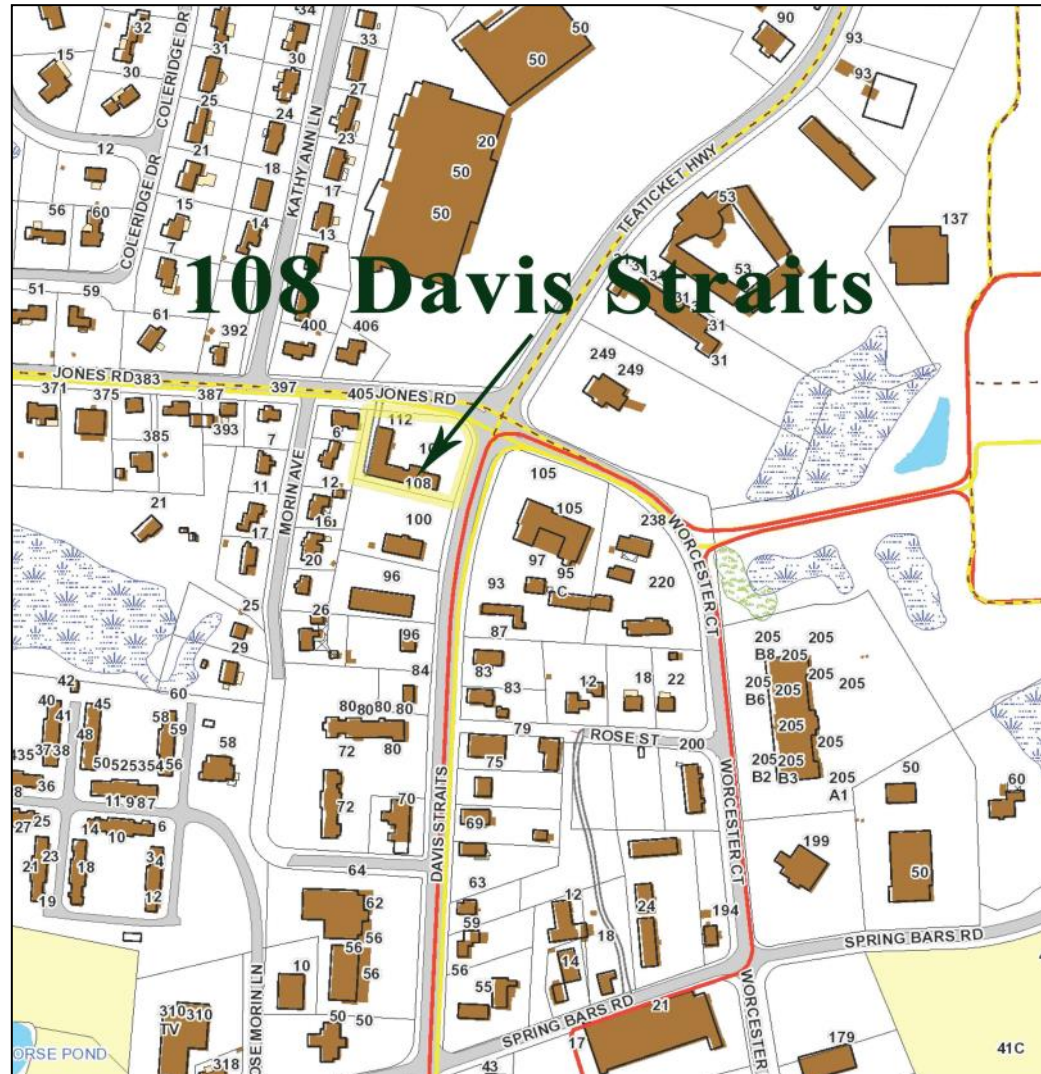
DETAILS

- * JUNCTION RTE 28 & JONES RD
- * AREA OF RETAIL USES
- * 6,558± SF BUILDINGS
 - UNIT - A LEFT FRONT
2,395± SF UNIT
LOWER LEVEL FOR STORAGE
2 PRIVATE BATHS
 - UNIT - B RIGHT FRONT
1,689± SF UNIT
1 PRIVATE BATH
 - UNITS A & B COMBINED
4,084± SF UNIT
- * ZONED B2 - BUSINESS 2

UNIT A - \$22/SF NNN

UNIT B - \$19/SF NNN

COMBINED - \$21/SF NNN



HARTEL COMMERCIAL REAL ESTATE

230 Jones Road
Suite 6
Falmouth MA 02540

40 Willard Street
Suite 207
Quincy MA 02169

Greg Hartel
617-256-3169
Greg@HartelRealty.com

Jody Shaw
508-566-3556
Jody@HartelRealty.com

Main Office
508-444-0172
www.HartelRealty.com



HARTEL COMMERCIAL REAL ESTATE

Strategic Real Estate Services



Satellite



HARTEL COMMERCIAL REAL ESTATE

230 Jones Road
Suite 6
Falmouth MA 02540

40 Willard Street
Suite 207
Quincy MA 02169

Greg Hartel
617-256-3169
Greg@HartelRealty.com

Jody Shaw
508-566-3556
Jody@HartelRealty.com

Main Office
508-444-0172
www.HartelRealty.com



HARTEL COMMERCIAL REAL ESTATE

Strategic Real Estate Services



FloorPlan - Unit A



HARTEL COMMERCIAL REAL ESTATE

230 Jones Road
Suite 6
Falmouth MA 02540

40 Willard Street
Suite 207
Quincy MA 02169

Greg Hartel
617-256-3169
Greg@HartelRealty.com

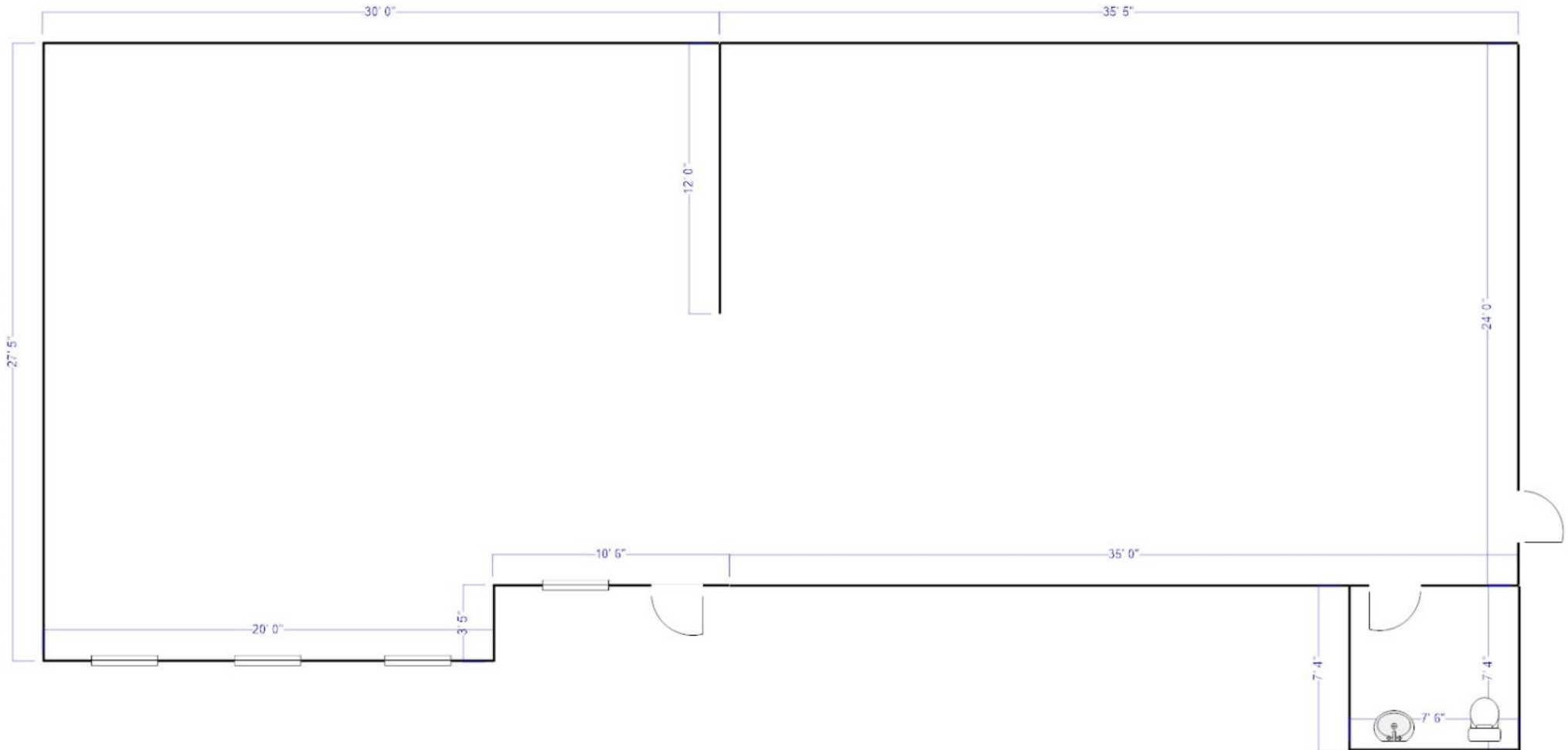
Jody Shaw
508-566-3556
Jody@HartelRealty.com

Main Office
508-444-0172
www.HartelRealty.com



HARTEL COMMERCIAL REAL ESTATE

Strategic Real Estate Services



FloorPlan - Unit B



HARTEL COMMERCIAL REAL ESTATE

230 Jones Road
Suite 6
Falmouth MA 02540

40 Willard Street
Suite 207
Quincy MA 02169

Greg Hartel
617-256-3169
Greg@HartelRealty.com

Jody Shaw
508-566-3556
Jody@HartelRealty.com

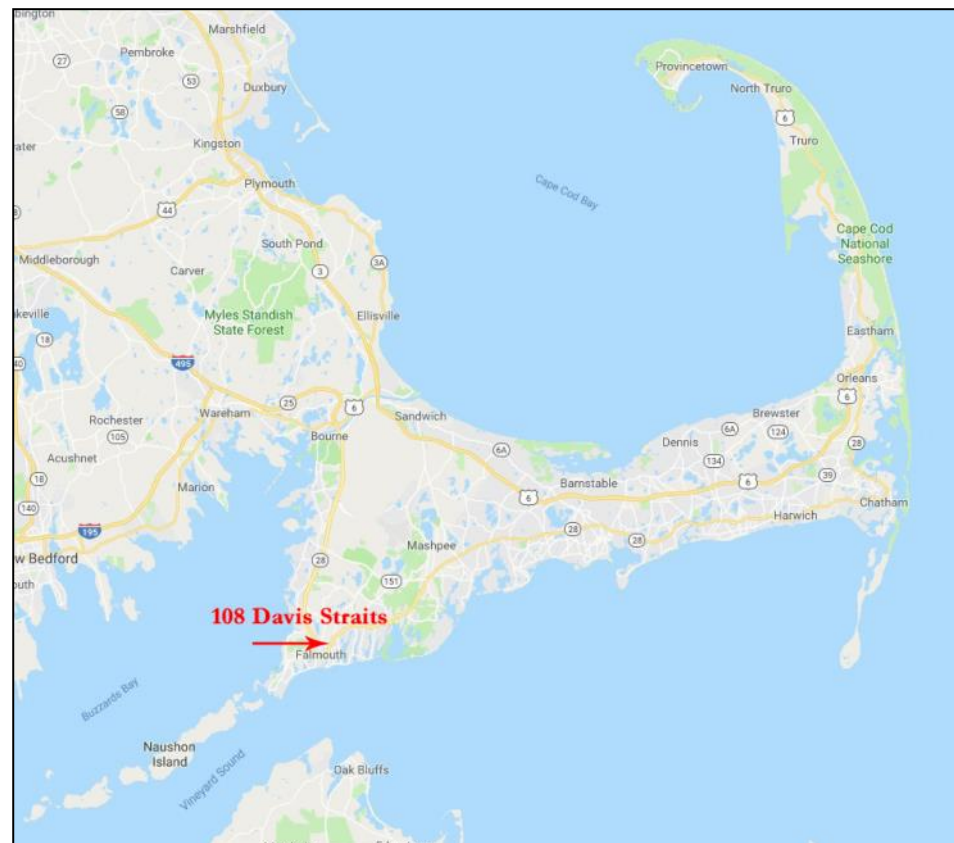
Main Office
508-444-0172
www.HartelRealty.com

HARTEL COMMERCIAL REAL ESTATE

Strategic Real Estate Services

108 Davis Straits aka Route 28 - Falmouth

This is a retail building with 6,558± SF, located strategically on the corner of Davis Straits (Route 28) and Jones Road. There are three units in this building, one occupied for several years by The Falmouth Pet Center and two vacant units all on a .70± Acre site. This is an extremely heavily traveled year round retail area. Complimentary businesses are located in the immediate neighborhood.





HARTEL COMMERCIAL REAL ESTATE

Strategic Real Estate Services





HARTEL COMMERCIAL REAL ESTATE

Strategic Real Estate Services

