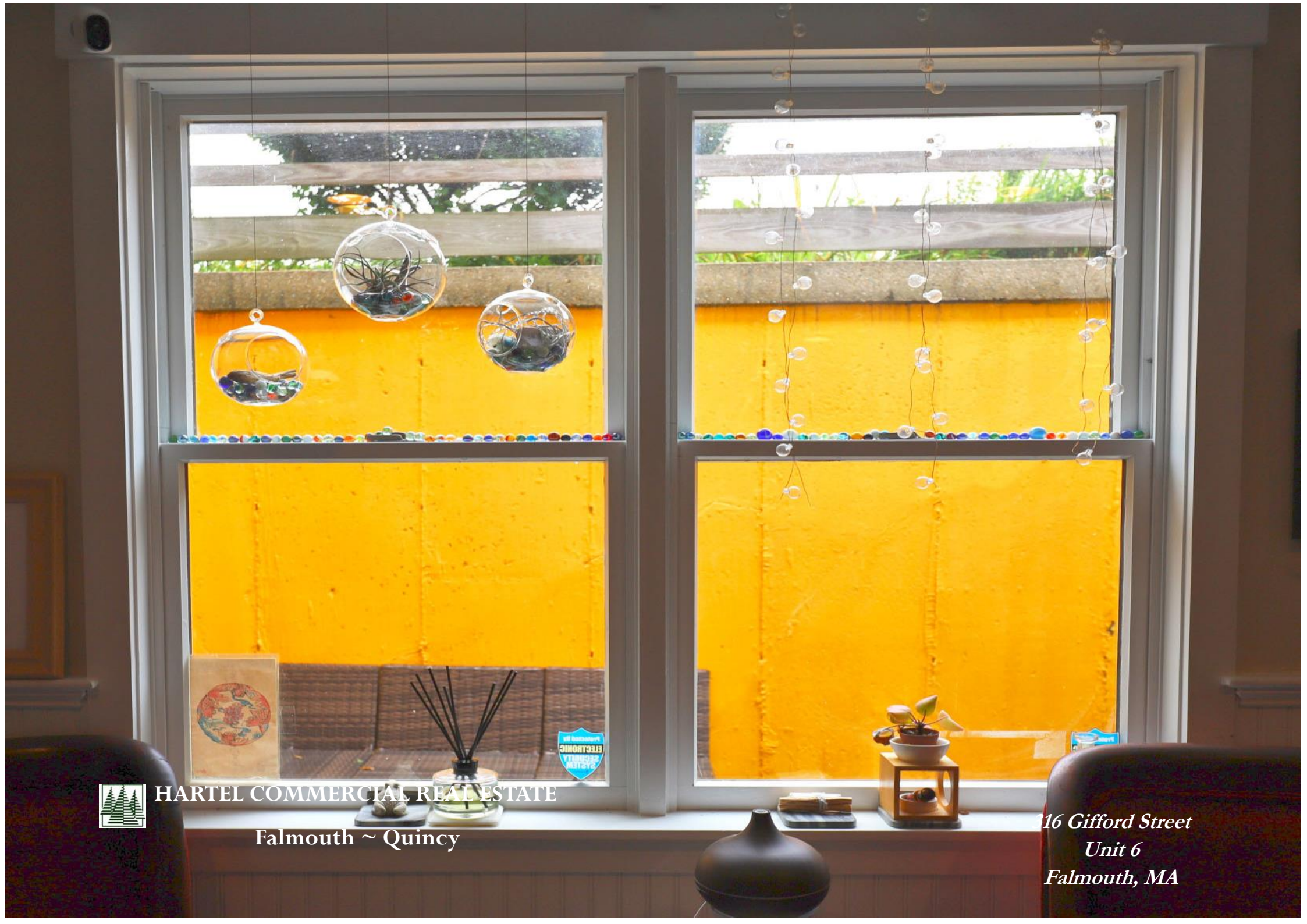




HARTEL COMMERCIAL REAL ESTATE

Falmouth ~ Quincy

*316 Gifford Street  
Unit 6  
Falmouth, MA*



HARTEL COMMERCIAL REAL ESTATE

Falmouth ~ Quincy

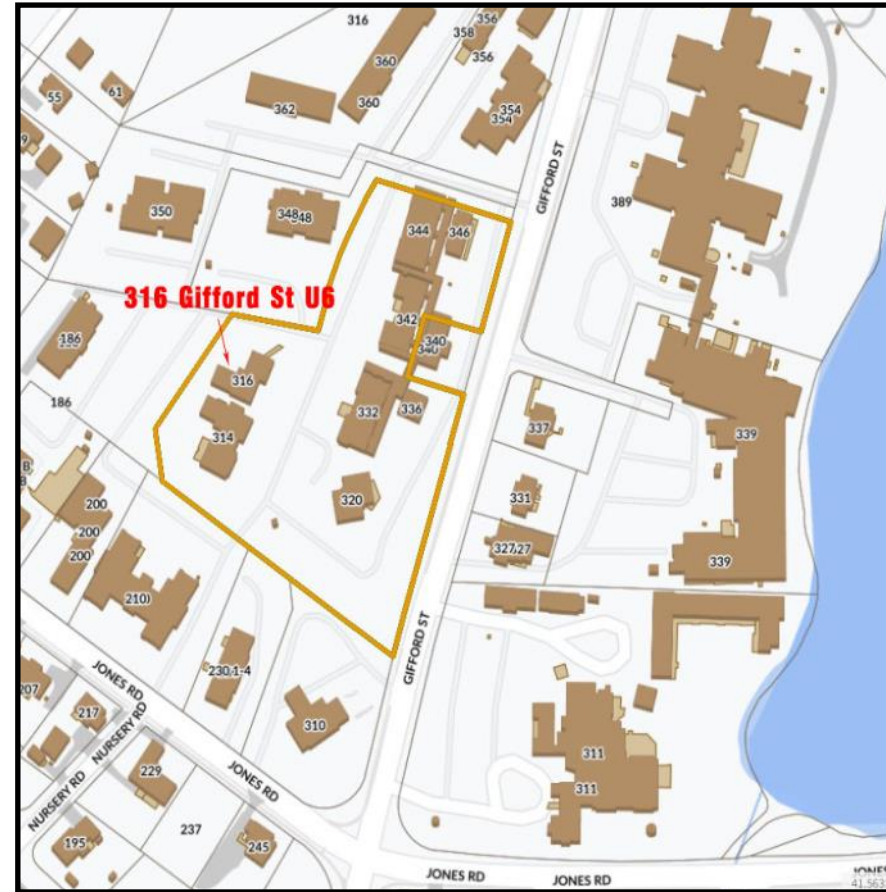
16 Gifford Street  
Unit 6  
Falmouth, MA



## DETAILS

- \* 316 GIFFORD ST - FALMOUTH
- \* AREA OF PROFESSIONAL AND RETAIL USES
- \* 564± SF IN UNIT 6
- \* OPEN SPACE - 1 Baths - Outside Area -Storage
- \* Ample Onsite Parking Spaces
- \* YR BUILT 1981
- \* ZONED B3 - BUSINESS 3

**Available Late September 2023**



**Offered for: \$950/Month plus Utilities**



HARTEL COMMERCIAL REAL ESTATE

230 Jones Road  
Suite 6  
Falmouth MA 02540

40 Willard Street  
Suite 207  
Quincy MA 02169

Greg Hartel  
617-256-3169  
Greg@HartelRealty.com

Jody Shaw  
508-566-3556  
Jody@HartelRealty.com

Main Office  
508-444-0172  
www.HartelRealty.com



# HARTEL COMMERCIAL REAL ESTATE

*Strategic Real Estate Services*



## Satellite



HARTEL COMMERCIAL REAL ESTATE

230 Jones Road  
Suite 6  
Falmouth MA 02540

40 Willard Street  
Suite 207  
Quincy MA 02169

Greg Hartel  
617-256-3169  
Greg@HartelRealty.com

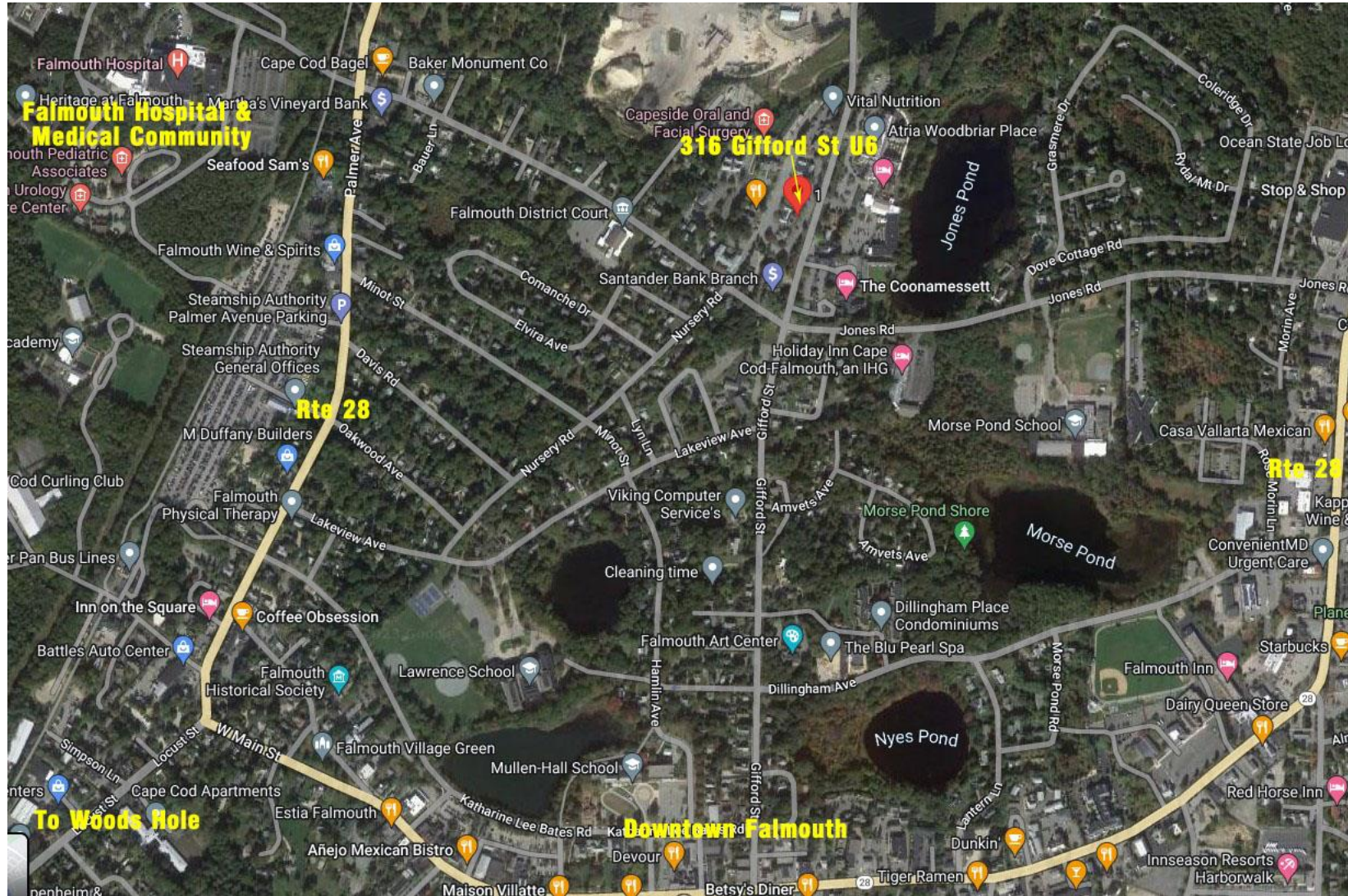
Jody Shaw  
508-566-3556  
Jody@HartelRealty.com

Main Office  
508-444-0172  
www.HartelRealty.com



# HARTEL COMMERCIAL REAL ESTATE

Strategic Real Estate Services



## Neighborhood View



HARTEL COMMERCIAL REAL ESTATE

230 Jones Road  
Suite 6  
Falmouth MA 02540

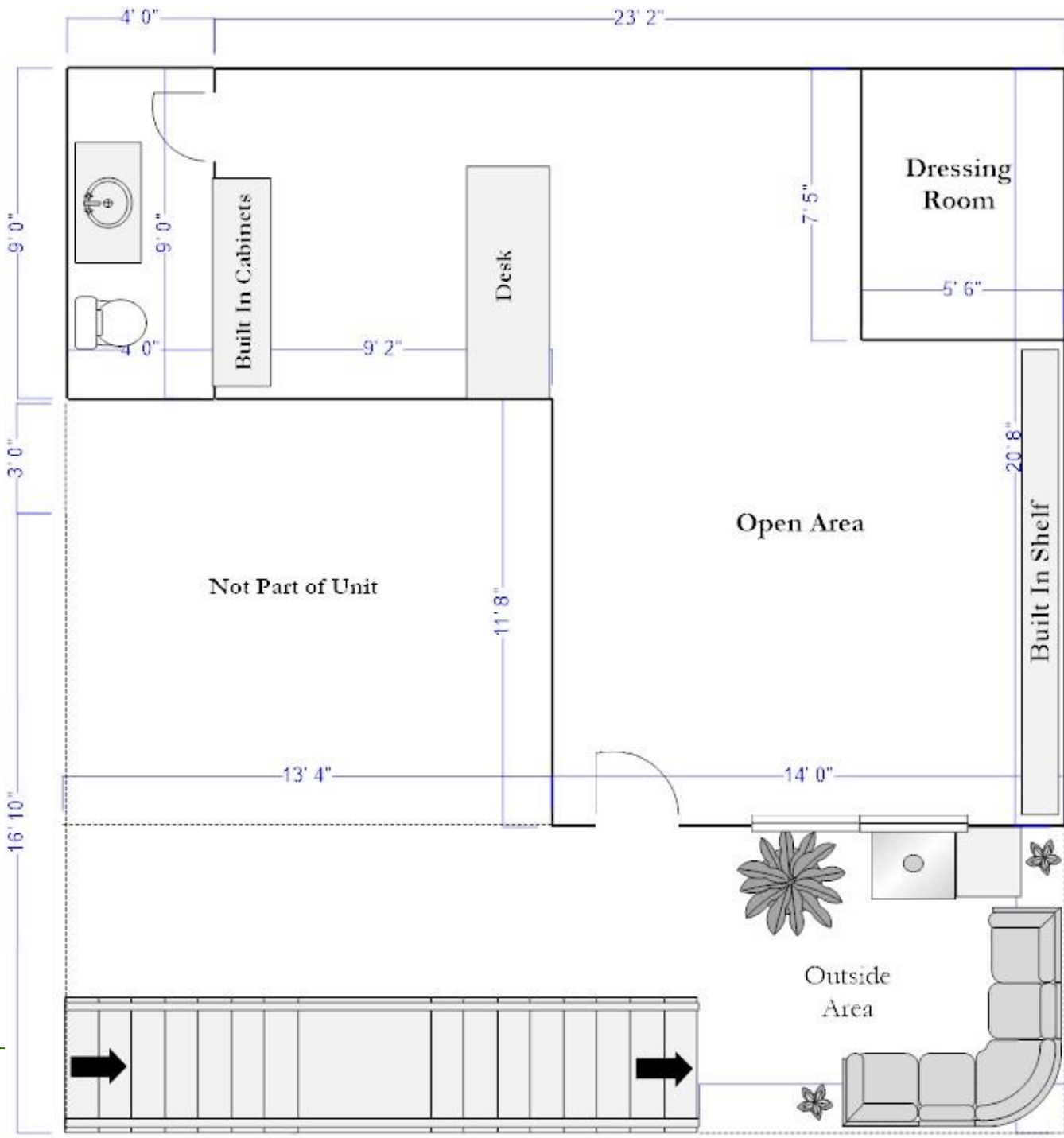
40 Willard Street  
Suite 207  
Quincy MA 02169

Greg Hartel  
617-256-3169  
Greg@HartelRealty.com

Jody Shaw  
508-566-3556  
Jody@HartelRealty.com

Main Office  
508-444-0172  
www.HartelRealty.com

**Floor Plan**



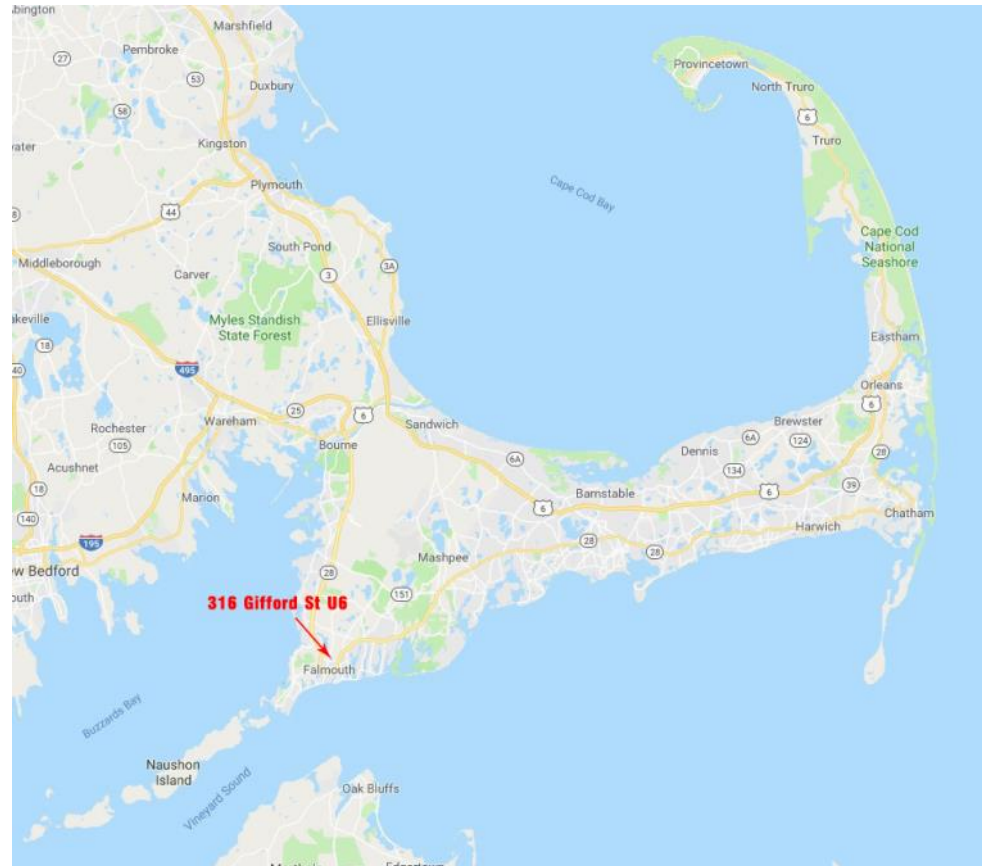
# HARTEL COMMERCIAL REAL ESTATE

*Strategic Real Estate Services*

---

## ***316 Gifford Street - Unit 6 - Falmouth***

**T**his is a 564± SF unit located in the Homeport Complex on Gifford Street in Falmouth within the heart of the business and medical district. This unit has large open space, 1 baths, storage and outside sitting area with onsite parking. This is an extremely heavily traveled year round retail/professional area. Complimentary businesses are located in the immediate neighborhood.

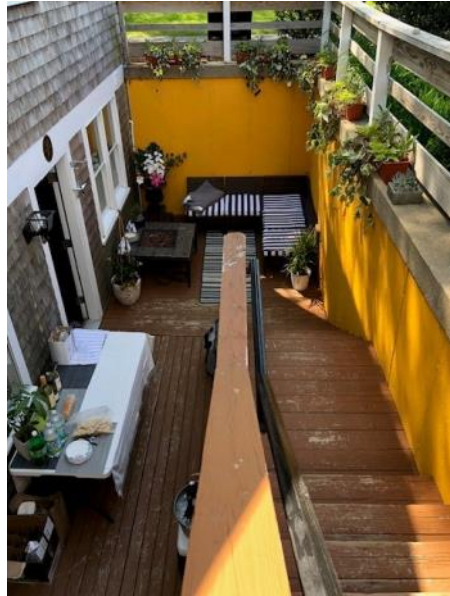




# HARTEL COMMERCIAL REAL ESTATE

*Strategic Real Estate Services*

---







# HARTEL COMMERCIAL REAL ESTATE

*Strategic Real Estate Services*

---

