



FOR LEASE ~ \$3,500/Month NNN

*31 Teaticket Highway, Tataketa Square
Rte. 28, Falmouth, MA*

3,022± SF Retail / Restaurant Space “As Is”

Excellent Visibility in High Traffic Area
Highway Route 28 Traffic Counts: 21,400/Cars/Day

Retained to Market by:



Hartel Commercial

230 Jones Road | 40 Willard Street
Suite 6 | Suite 207
Falmouth, MA | Quincy, MA

Greg Hartel
617-256-3169
Greg@HartelRealty.com

Jody Shaw
508-566-3556
Jody@HartelRealty.com

Main Office:
508-444-0172
www.HartelRealty.com

PROPERTY DETAILS

<i>Property Address</i>	31 Teaticket Highway, Route 28 Tatakot Square Falmouth, MA
<i>Land Area</i>	43,560± SF
<i>FY 2014 Assessment</i>	\$349,100
<i>FY 2014 Taxes</i>	\$2,845
<i>Town/Well Water</i>	Municipal
<i>Town/Private Septic</i>	Municipal
<i>Zoning</i>	BU
<i>Unit Location</i>	Mid-Section of Buildings
<i>Unit Size</i>	3,022± SF
<i>Floor</i>	2-Level
<i>Parking</i>	Common Lot – Ample Parking
<i>Amenities</i>	Great Location on Route 28 Heavily Travelled Road Vanilla Box Build Out Elevator Servicing All Floors

PROPERTY SITE OVERVIEW

The town of Falmouth is located at the double highway's end and continues in an easterly fashion along Route 28. To the west is Buzzards Bay, the village of Woods Hole to the south, east by the town of Mashpee and north by the town of Bourne. Along Route 28 is a mix of both commercial and residential winding through downtown Falmouth and points beyond.

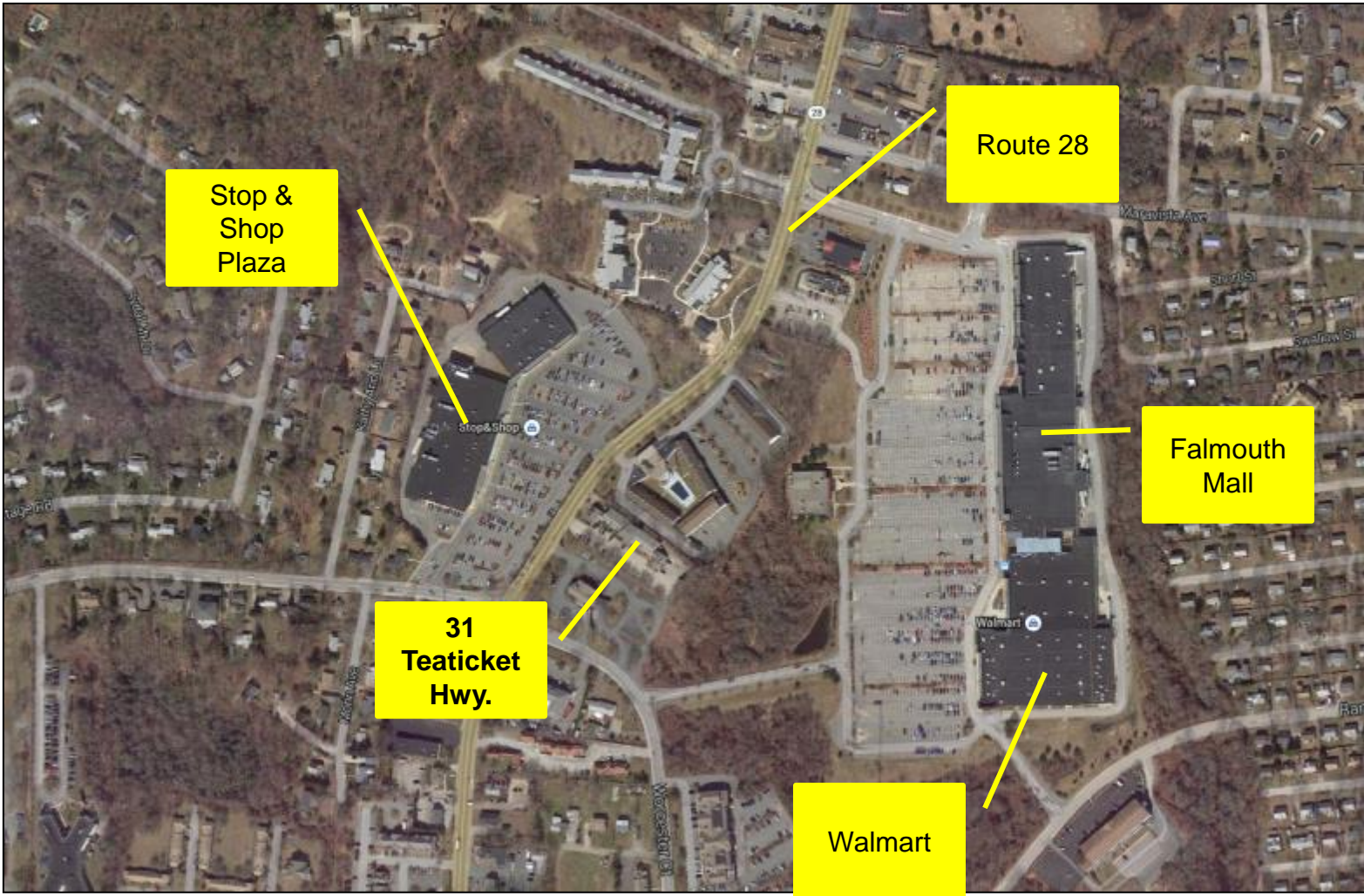
The immediate area surrounding our property is comprised of Stop & Shop Grocery Store, Several Banks, Falmouth Plaza, Falmouth Mall, Walmart, Shaw's Supermarket, small retail shops, the 99 Restaurant, Starbucks, several small eating establishments and residential dwellings. In the immediate plaza as our property is Procuts, a dental office, mortgage company and an eyeglass shop.

31 Teaticket Highway, aka Route 28 location is the Tatakett Square. Within this locus is a strip of adjoining retail/office shops. Our property is the largest in the plaza and was formerly the Iguana's Restaurant. Presently this space has a total of 3,022± SF on the first and second floors with a third floor office and full basement included with the lease. Additionally, there is an elevator that services the basement, first and second floors. This is a great opportunity to lease a vanilla box build-out with utilities in place and road signage. Being leased "As Is".

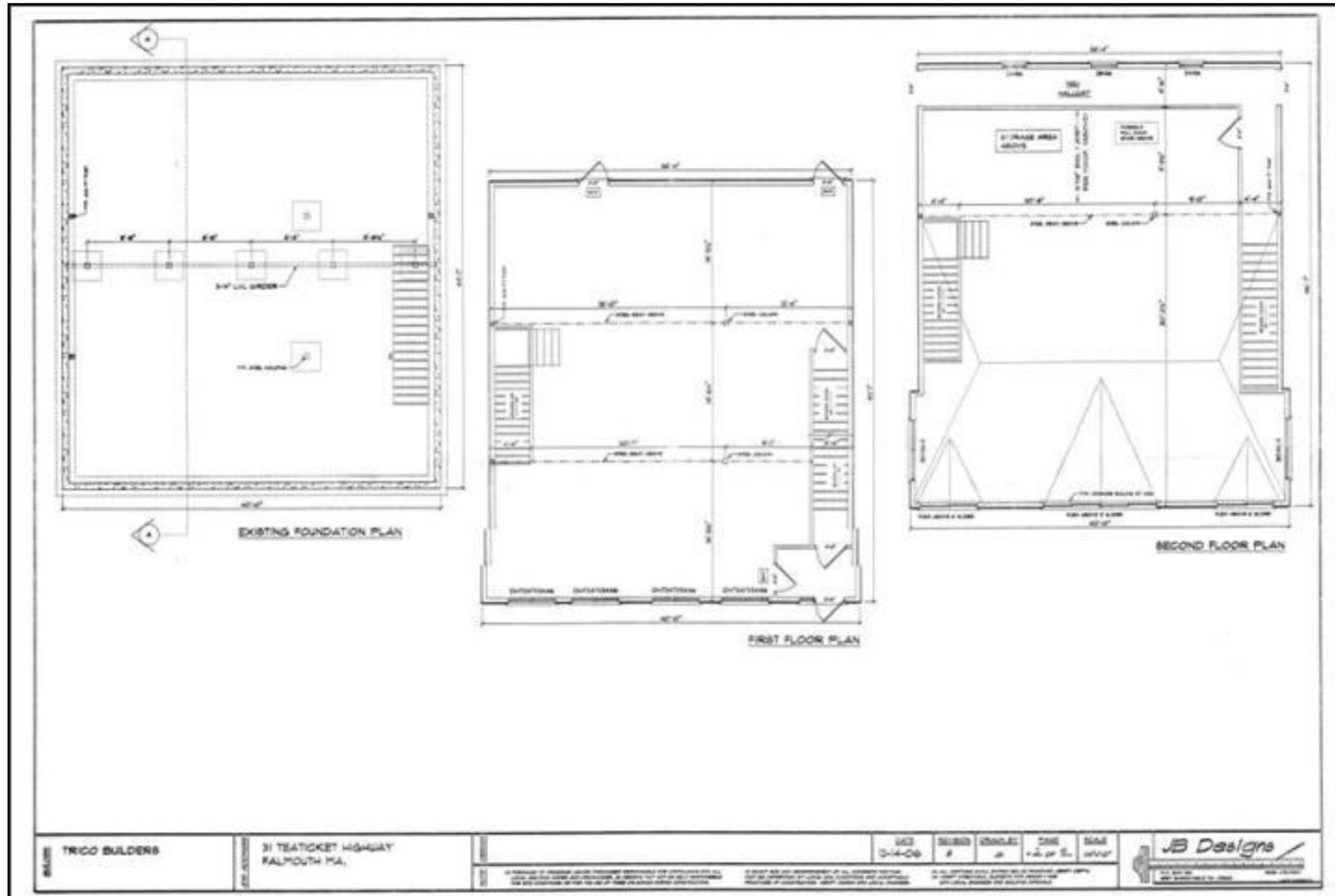
MAP



SATELLITE



PROPERTY 1ST & 2ND FLOOR PLANS



PROPERTY ELEVATIONS

