



FOR LEASE

**FENCED/PAVED GROUND STORAGE
COVERED CONTRACTOR BAYS - UNDER SOLAR**

31,659± SF Bay For Lease at \$6,900/Mo

Two 15,380± SF Bays For Lease at \$4,500/Mo/Each

118 ECHO ROAD

MASHPEE, MA



HARTEL COMMERCIAL REAL ESTATE

FALMOUTH - QUINCY



**Fenced In - Covered Contractor Bays - Under Solar
Utilities and Fencing Built to Suit for Tenant Needs
Ground Storage For Lease**

- * LOCATED OFF ROUTE 130
- * 2.83± MILES TO ROUTE 28
- * 3 INDIVIDUAL CONTRACTOR BAYS - FENCED
- * 1 CONTRACTOR BAY AT 31,659± SF TOTAL
CONTRACTOR BAY DIMENSIONS:
154.32' X 205.15'/EA
- * 2 CONTRACTOR BAYS AT 15,380±/SF EACH
CONTRACTOR BAY DIMENSIONS: 77.16'X102.58'
- * WASH AREA FOR TRUCKS
- * ONSITE BATHROOM

3 Contractor Bays Available

Fenced and Paved

**31,659± SF Bay For Lease at \$6,900/Mo
Two 15,380± SF Bays For Lease at \$4,500/Mo/Each**

Estimated Completion:

November 2024

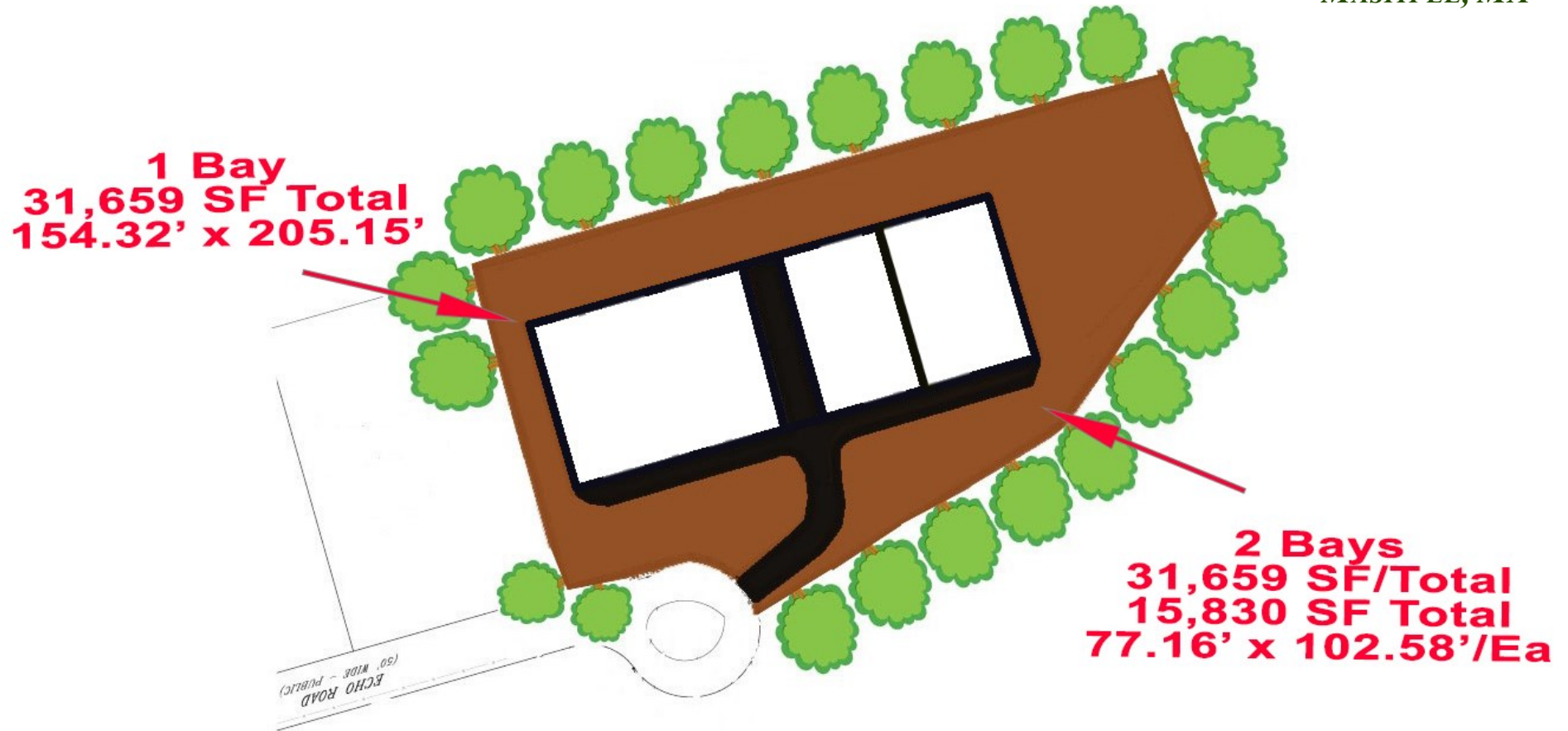


HARTEL COMMERCIAL REAL ESTATE

FALMOUTH - QUINCY

118 ECHO ROAD

MASHPEE, MA



**118 Echo Road - Mashpee
Solar Covered - Fenced Bays**

Conceptual Plan of Contractor Bays



FALMOUTH - QUINCY

PROPOSED ENTRANCE SIGN, TYPE AND LOCATION TO BE FIELD VERIFIED BY THE TOWN OR ITS ENGINEER. PROPOSED 24-HR EMERGENCY CONTACT/INFORMATIONAL SIGN AT ENTRANCE (COORDINATE LOCATION WITH OWNER)

MAP 18, PARCEL J
N/A
CARRAL, TAYLOR

PROPOSED UNDERGROUND ELECTRICAL CONDUIT

PO @ EXISTING EVERSOURCE U/G DISTRIBUTION CIRCUIT #24-938. FINAL LOCATION & DESIGN TO BE DETERMINED BY UTILITY.

SEWERAGE TOP OF HYDRANT @ 114.34

CB/DISC FOUND

ECHO ROAD
(50' WIDE - PUBLIC)

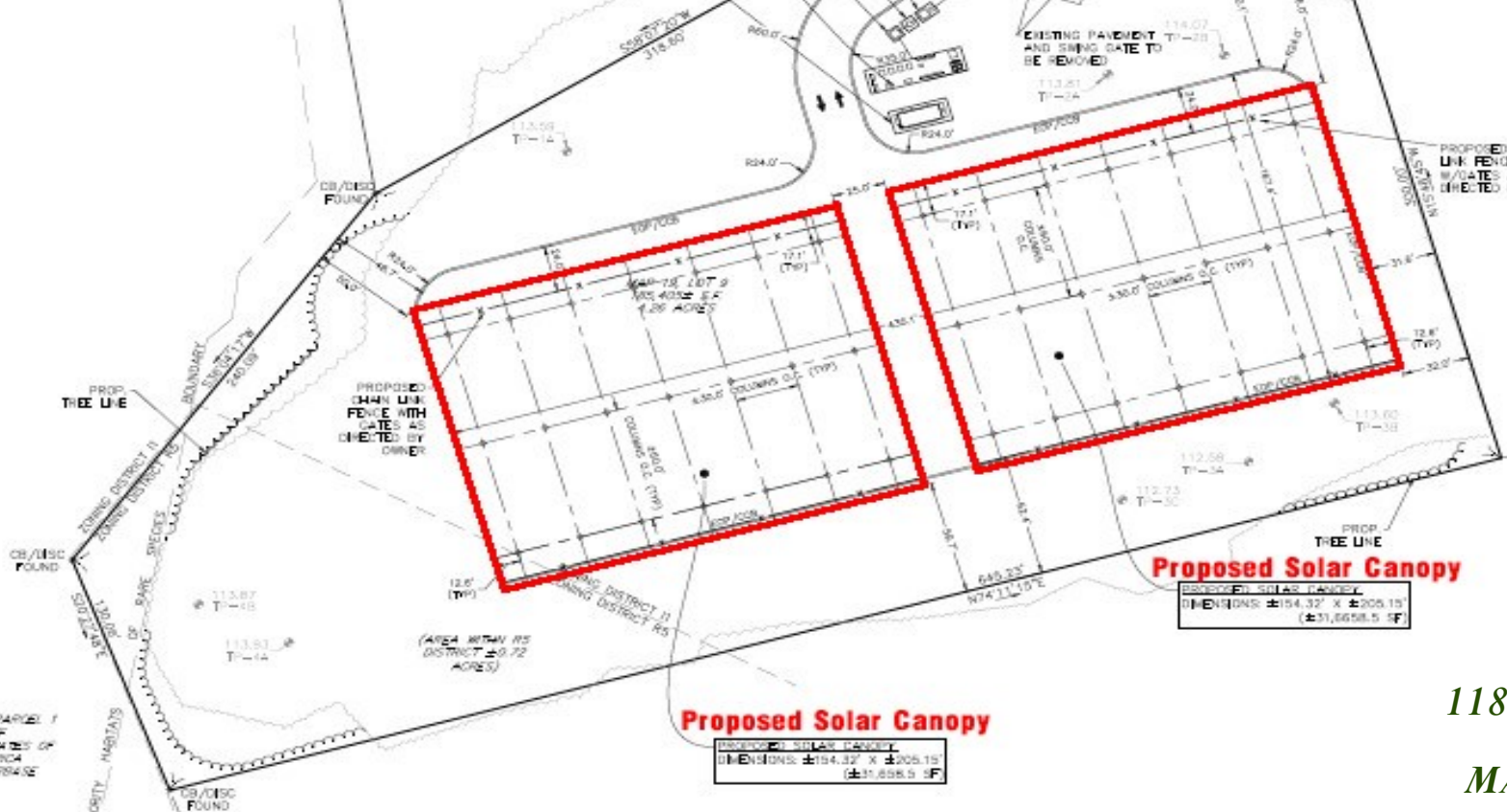
MAP 25, PARCEL 1
N/A
UNITED STATES OF AMERICA
OTS AIRBASE

- PROPOSED UTILITY EQUIPMENT PAD W/ LOADBREAK SWITCH
- PROPOSED PAD MOUNTED PRIMARY UTILITY WATER
- PROPOSED CUSTOMER PAD MOUNTED LOADBREAK SWITCH
- PROPOSED PAD MOUNTED INVERTERS, RELAYS, AND DISCONNECT, SPOT BUYS, SOLINGA TRANSFORMER & PANELBOARD
- PROPOSED EQUIPMENT PAD W/ BATTERY CONTAINERS

EXISTING PAVEMENT TO BE REMOVED

PROPOSED CHAIN LINK FENCE W/ GATES AS DIRECTED BY OWNER

MAP 18, PARCEL 8
N/A
BRETT REID, ET AL TRS



Proposed Solar Canopy

PROPOSED SOLAR CANOPY
DIMENSIONS: ±154.32' X ±205.15'
(±31,658.5 SF)

Proposed Solar Canopy

PROPOSED SOLAR CANOPY
DIMENSIONS: ±154.32' X ±205.15'
(±31,658.5 SF)

118 ECHO ROAD
MASHPEE, MA

MAP 25, PARCEL 1
N/A
UNITED STATES OF AMERICA
OTS AIRBASE

MAP 25, PARCEL 8
N/A
FORESTHILL ROAD, LLC



HARTEL COMMERCIAL REAL ESTATE

FALMOUTH - QUINCY

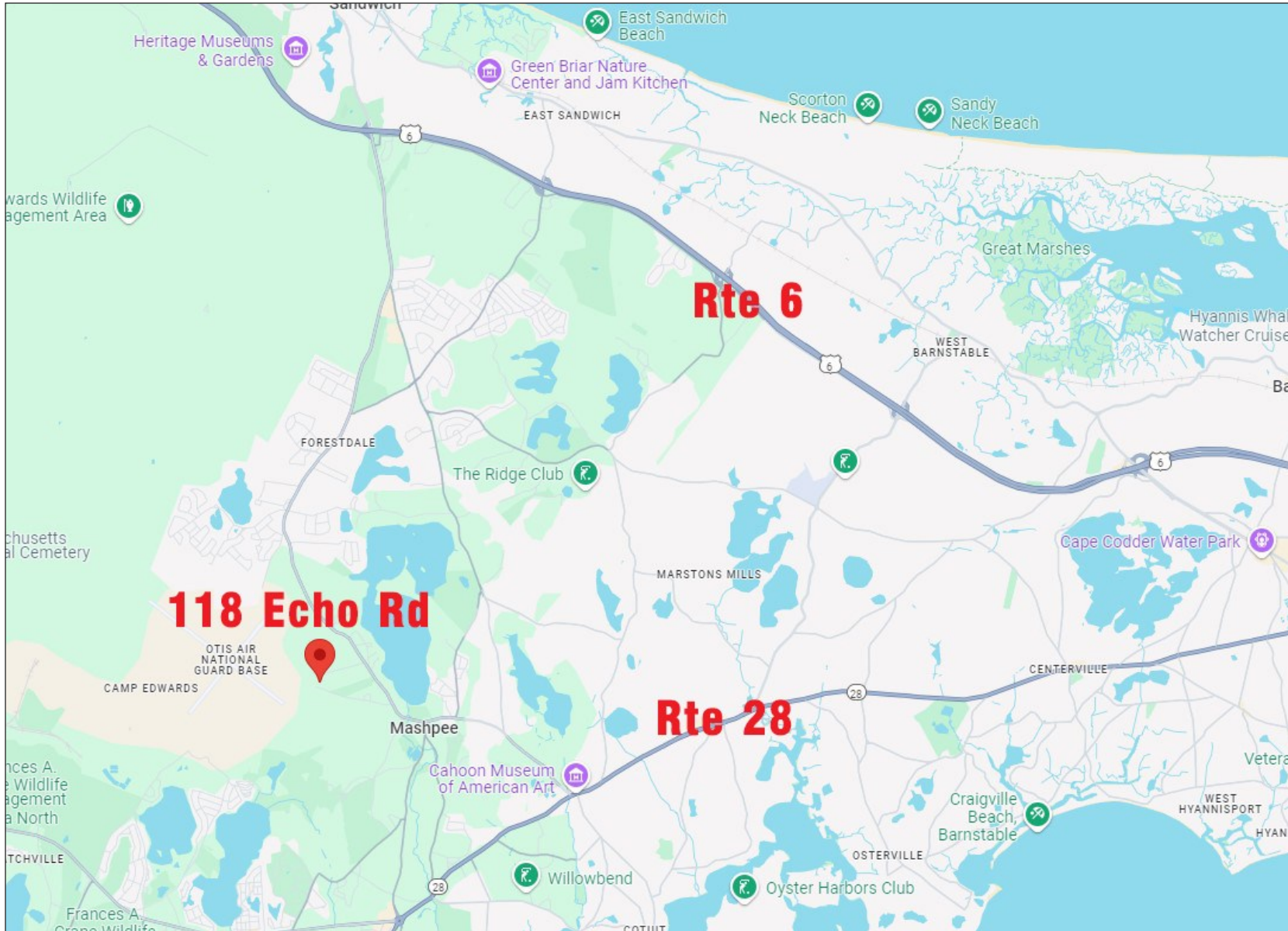
118 ECHO ROAD

MASHPEE, MA



118 Echo Rd - Mashpee, MA

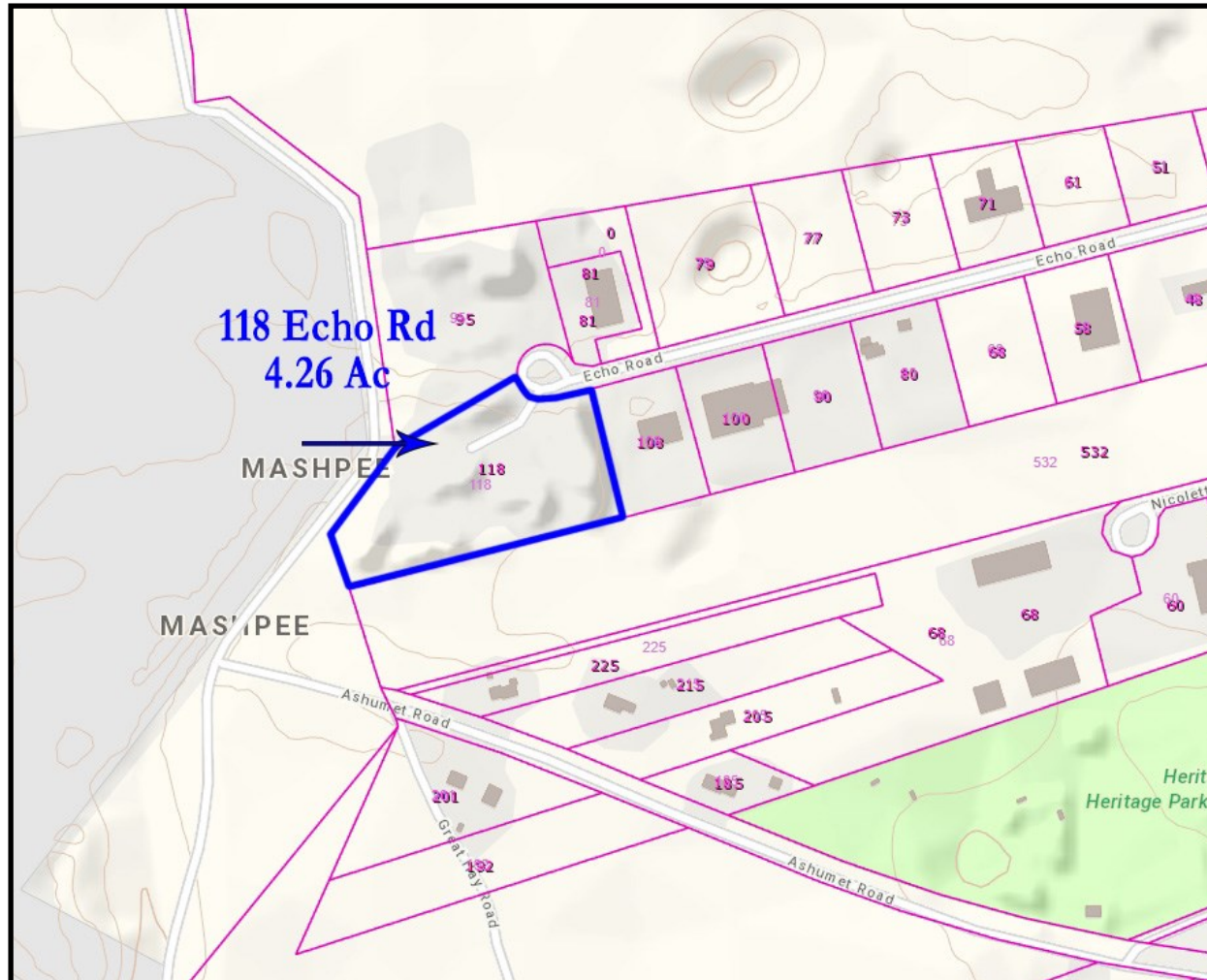
4.26± Acre Site - Easy Access to Rtes 6 & 28





HARTEL COMMERCIAL REAL ESTATE

Strategic Real Estate Services



Assessor Map



HARTEL COMMERCIAL REAL ESTATE

230 Jones Road
Suite 6
Falmouth MA 02540

40 Willard Street
Suite 207
Quincy MA 02169

Greg Hartel
617-256-3169
Greg@HartelRealty.com

Main Office
508-444-0172
www.HartelRealty.com



HARTEL COMMERCIAL REAL ESTATE

Strategic Real Estate Services



Zoning Map



HARTEL COMMERCIAL REAL ESTATE

230 Jones Road
Suite 6
Falmouth MA 02540

40 Willard Street
Suite 207
Quincy MA 02169

Greg Hartel
617-256-3169
Greg@HartelRealty.com

Main Office
508-444-0172
www.HartelRealty.com