



HARTEL COMMERCIAL REAL ESTATE

Strategic Real Estate Services

Mashpee Deer Crossing Plaza EXCELLENT PROFESSIONAL OFFICE LOCATION FOR LEASE - D23

681 FALMOUTH ROAD ~ DEER CROSSING ~MASHPEE, MA

Offered at \$895/Mo - Plus Utilities



- * Professional Office Space - Excellent Location at Deer Crossing
- * Second floor Walk Out - Spacious Office Space
- * Plenty of on site parking.
- * D23 has 570 SF of space Available Now
- *



Hartel Commercial Real Estate

230 Jones Rd/Ste 6/Falmouth, MA
40 Willard St/Ste 207/Quincy, MA



Assessor Map



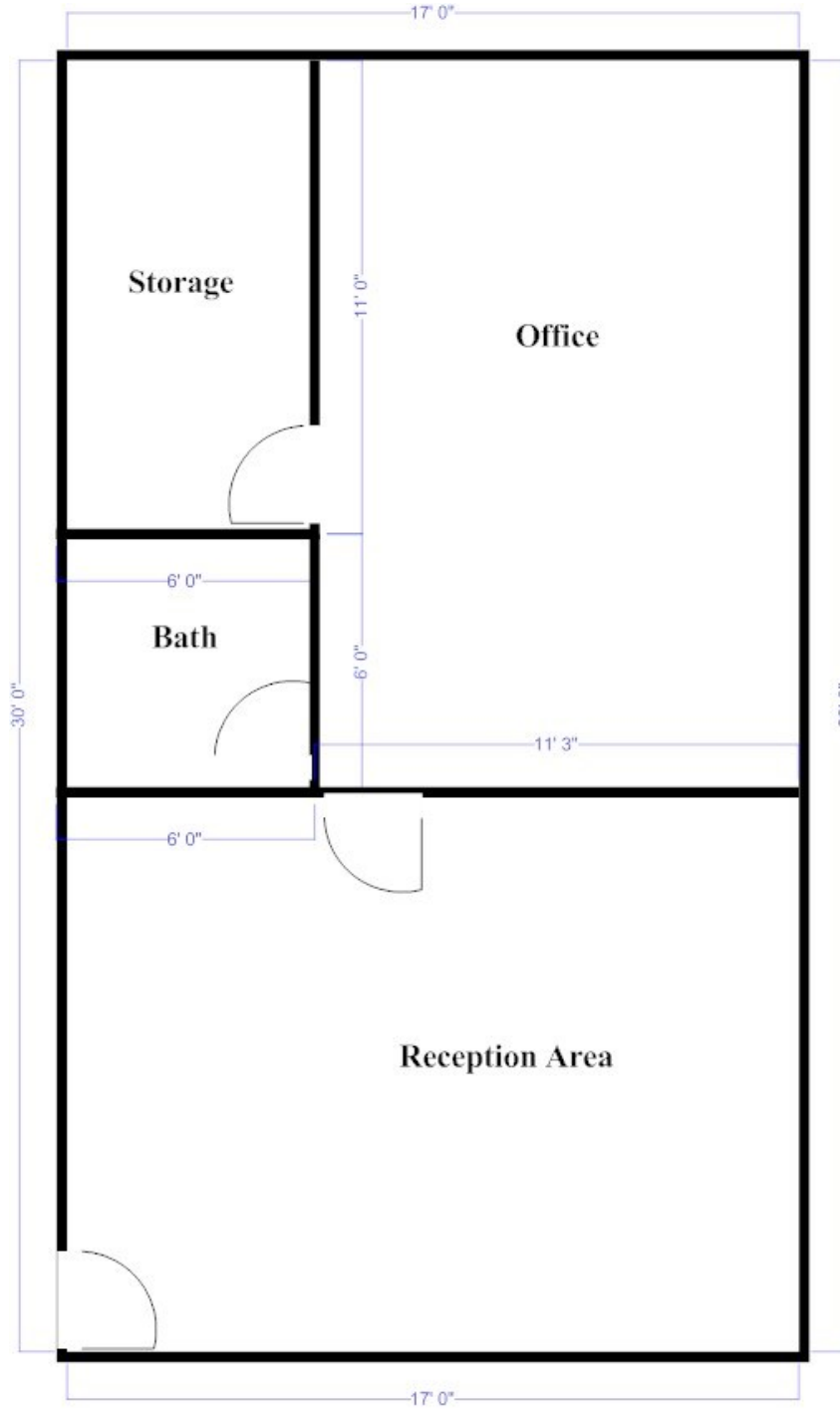
Unit	D23
GLA	570± SF
Lease Terms	\$895/Month
Floor	First/Rear of Plaza
Location	Just prior to Mashpee Commons Across Street from South Cape Plaza
Zoning:	C1
Parking	Onsite

Property

D23 Deer Crossing Plaza is located directly in the heart of the Mashpee Business District with excellent exposure and high visibility. The building is one of five within this location, with many diverse businesses and keeping in the character and charm of Cape Cod. The inside is clean and bright with seven offices, large reception and wait area, many windows, kitchenette, and common hall baths. Handicap Accessible and has the convenience of WiFi and with all the modern conveniences. There is a side entrance/exit for employees, as well as a main entrance.



Floor Plan



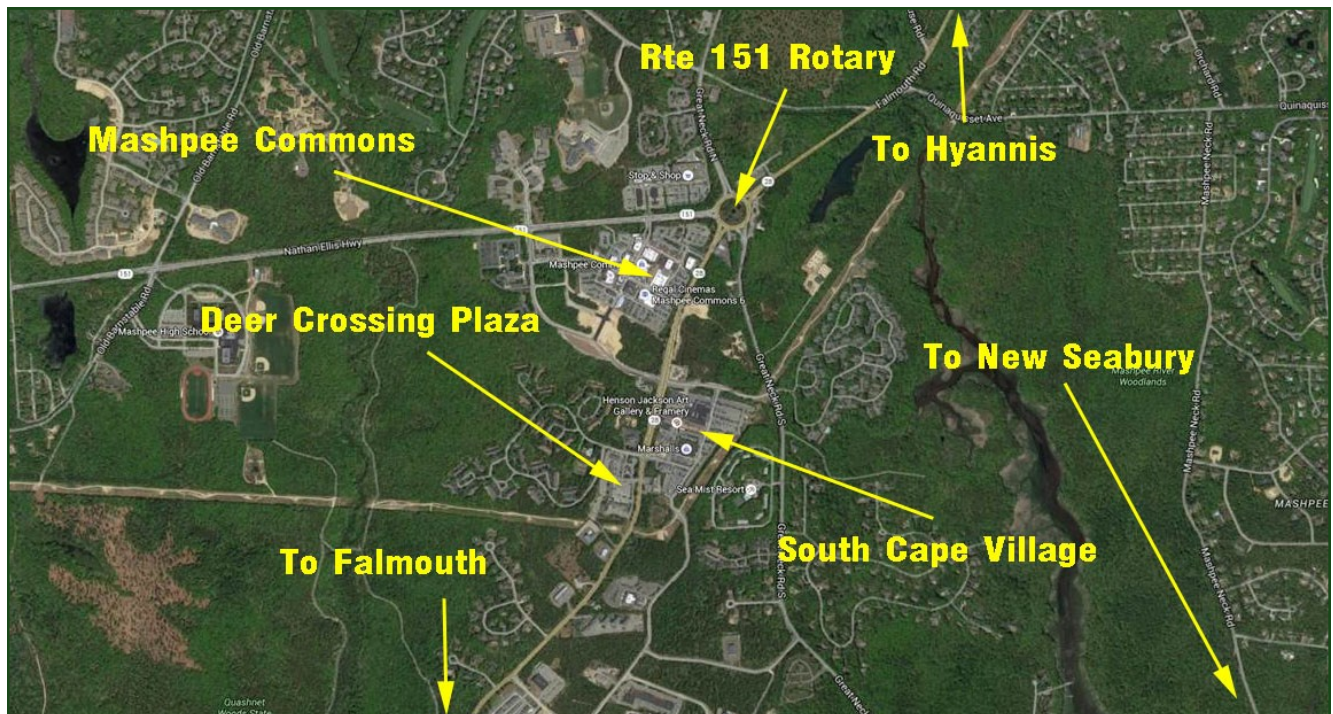
Unit -D23
Deer Crossing
681 Falmouth Road
Mashpee, MA



HARTEL COMMERCIAL REAL ESTATE

Strategic Real Estate Services

SATELLITES





HARTEL COMMERCIAL REAL ESTATE

Strategic Real Estate Services

Photographs



Greg Hartel
Phone: 617-256-3169
E-mail:
Greg@HartelRealty.com

Jody Shaw
Phone: 508-566-3556
E-mail:
Jody@HartelRealty.com

230 Jones Road
Suite 6
Falmouth, MA 02540

40 Willard Street
Suite 207
Quincy, MA 02169

www.HartelRealty.com



HARTEL COMMERCIAL REAL ESTATE

Strategic Real Estate Services

