



Lot 2B

Lot 3A

370 Wareham St - Rte 28
Middleboro, MA

For Sale at ~~\$17,900,000~~ - **NEW PRICE \$12,000,000**

Industrial For Sale | 25.82± Acres - 4 Buildings 77,031± SF & 3 Approved Buildings - 44,295± SF

Jody Shaw 508-566-3556 Jody@HartelRealty.com
Greg Hartel 617-256-3169 Greg@HartelRealty.com



HARTEL COMMERCIAL REAL ESTATE
Falmouth ~ Quincy



**Entire Property 25.82± Acres
FOR SALE
\$12,000,000**

**POTENTIAL TO SUBDIVIDE
AND BUILD TO SUIT**

Property Summary - For Sale Lot 2B & Lot 3A

Lot 3A - 3 Proposed Buildings Approved 44,295± SF Total
Lot 2B - 4 Buildings 77,031± SF Total
25.82± Acre Site - Lot 2B & 3A
Ample Parking
14 x 14 Overhead Doors
Private Bath in Each
3 Phase Electric - Gas Heat
Floor Drains into Tight Tanks w/Septic
Fully Sprinkled
General Use Zoning
Close to Interstate 495 & Direct Location on Route 28

For Sale at \$12,000,000

370 Wareham St - Rte 28 - Middleboro, MA

Lot 2B & Lot 3A - For Sale \$12,000,000

LOT 3A - 3 PROPOSED INDUSTRIAL BUILDINGS APPROVED
TOTALING 44,295± SF

**ROAD & UTILITIES
INSTALLED TO THE SITE**

Lot 2B - 4 Buildings - 77,031 SF Total

Building 9

17,496± SF

Building 13

19,845± SF

Building 11

19,845± SF

Building 15

19,845± SF

**Entire Property
25.82± Acres**

POTENTIAL TO SUBDIVIDE
AND BUILD TO SUIT

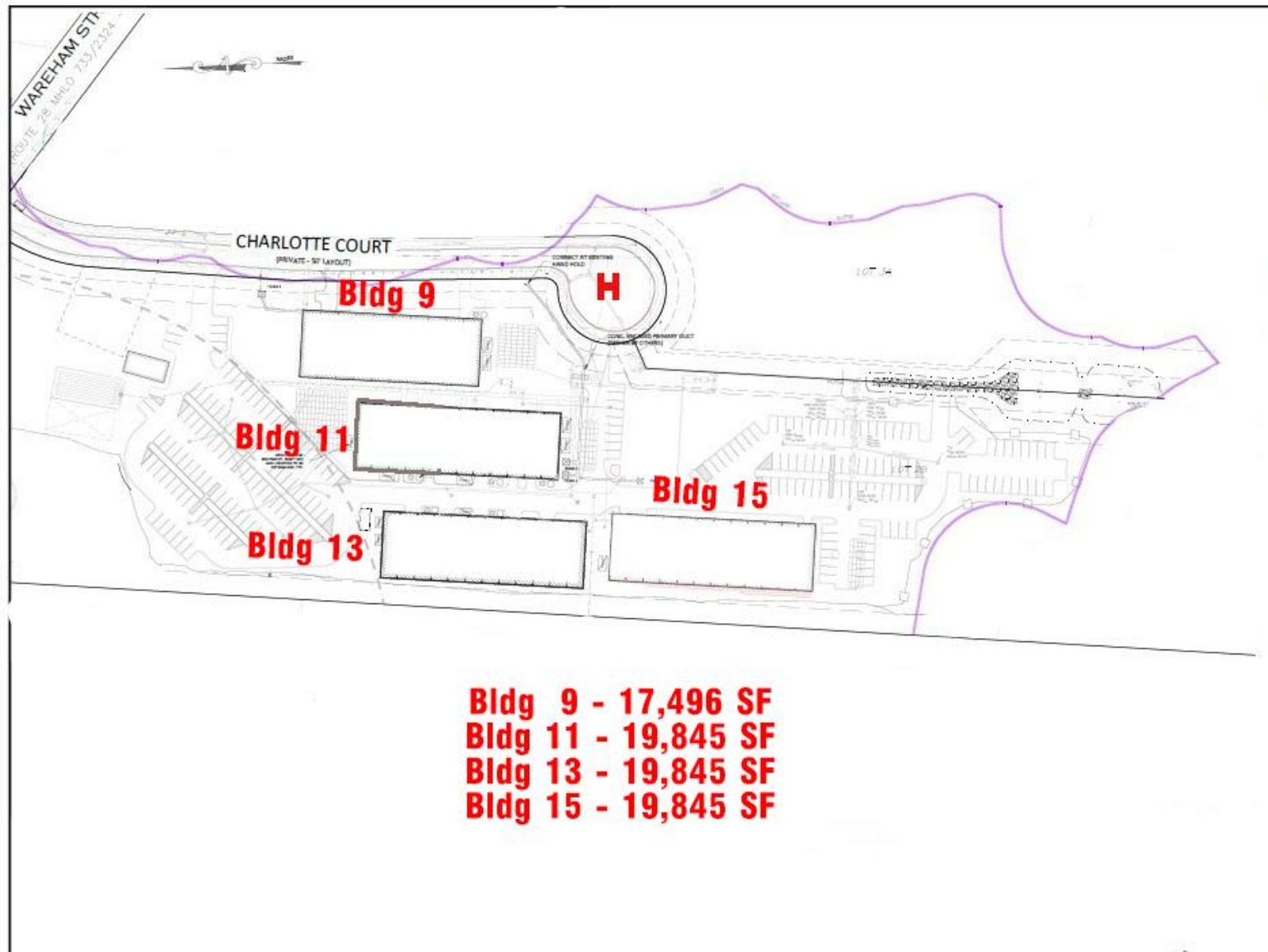
Sale Information

Entire Property - 25.82± Acres -
\$12,000,000

- * Lot 2B - 4 Industrial Buildings
77,031± SF
- * Approved for 3 Industrial Buildings
44,295± SF

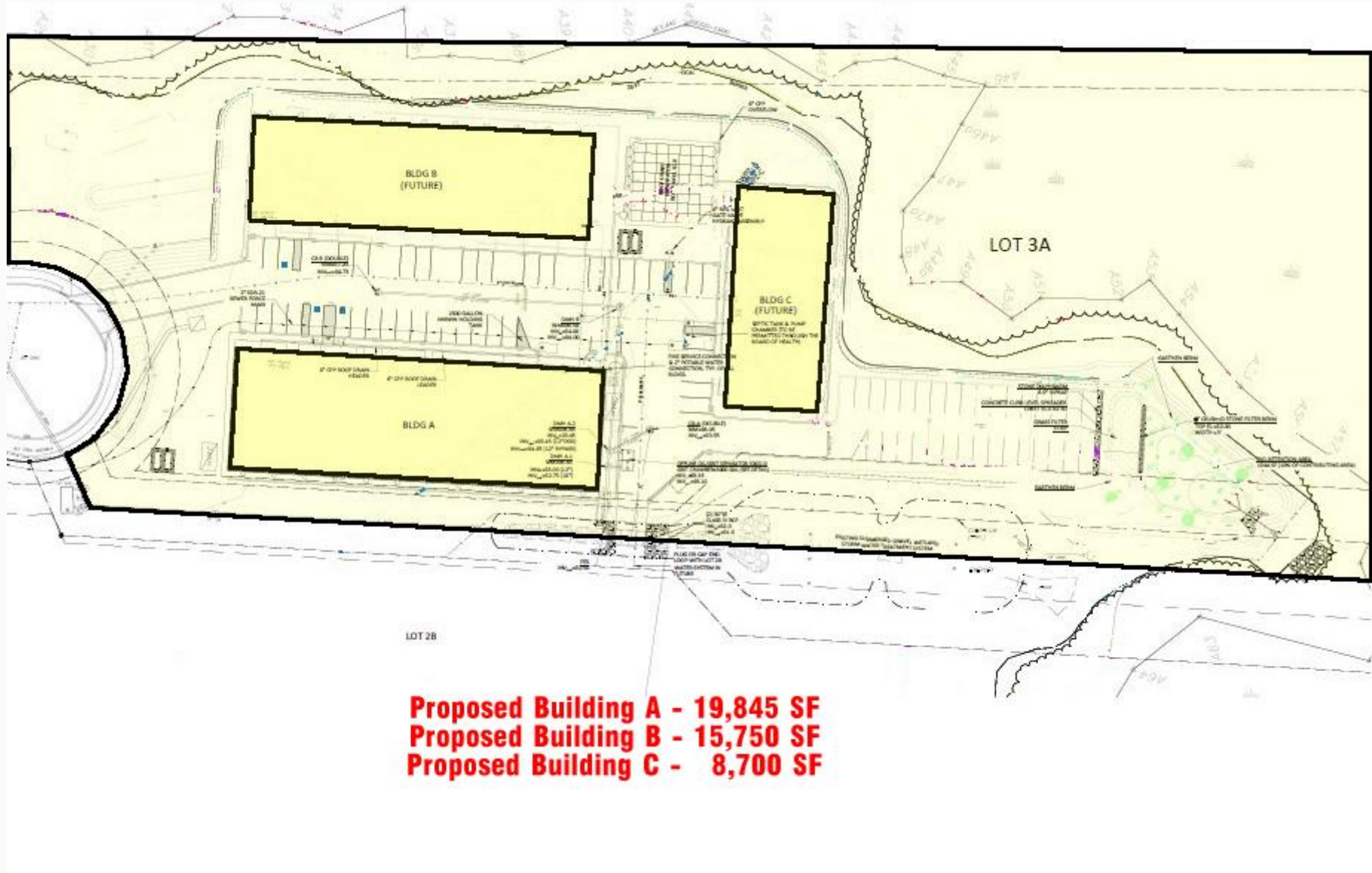
Potential to Subdivide and Build to Suit

370 Wareham St - Rte 28 - Middleboro, MA



Site Plan - Lot 2B

370 Wareham St - Rte 28 - Middleboro, MA



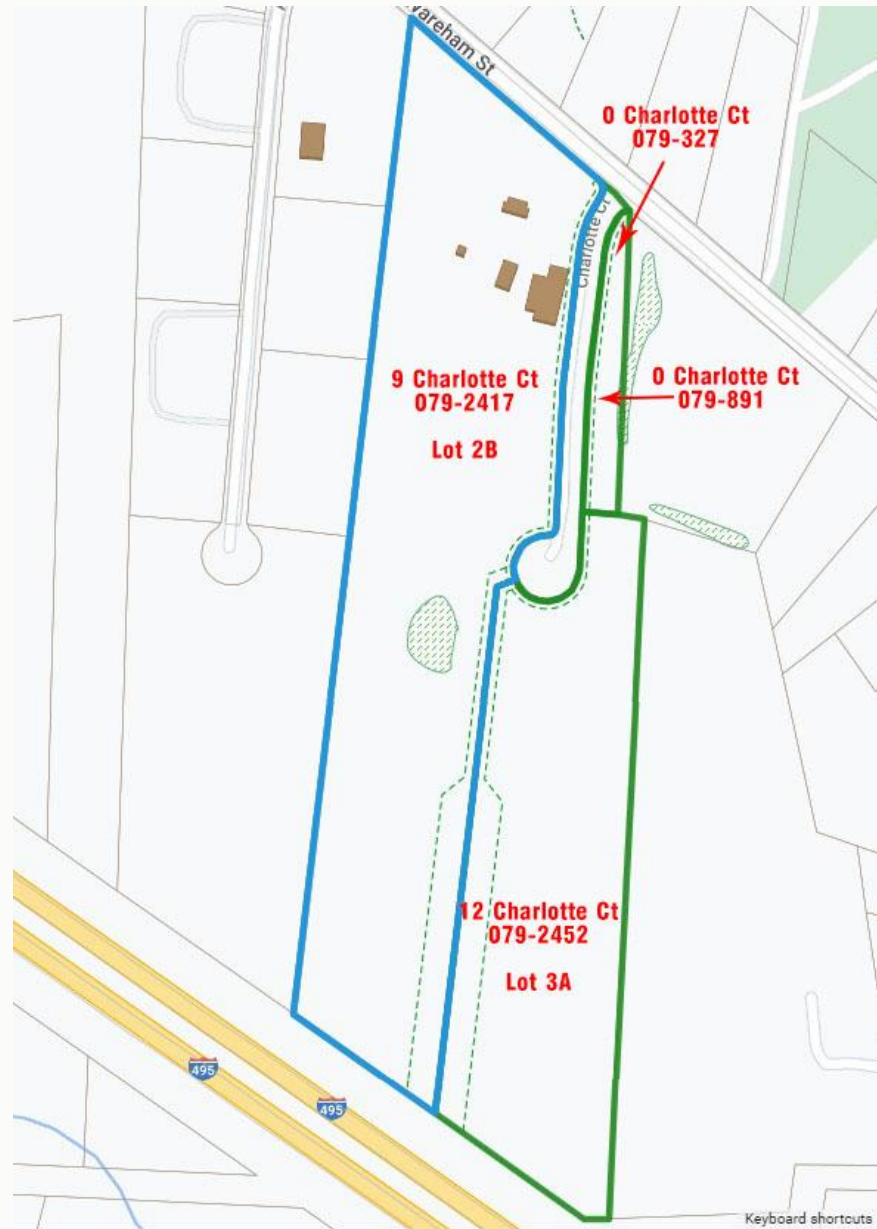
Conceptual Site Plan - Lot 3A

370 Wareham St - Rte 28 - Middleboro, MA

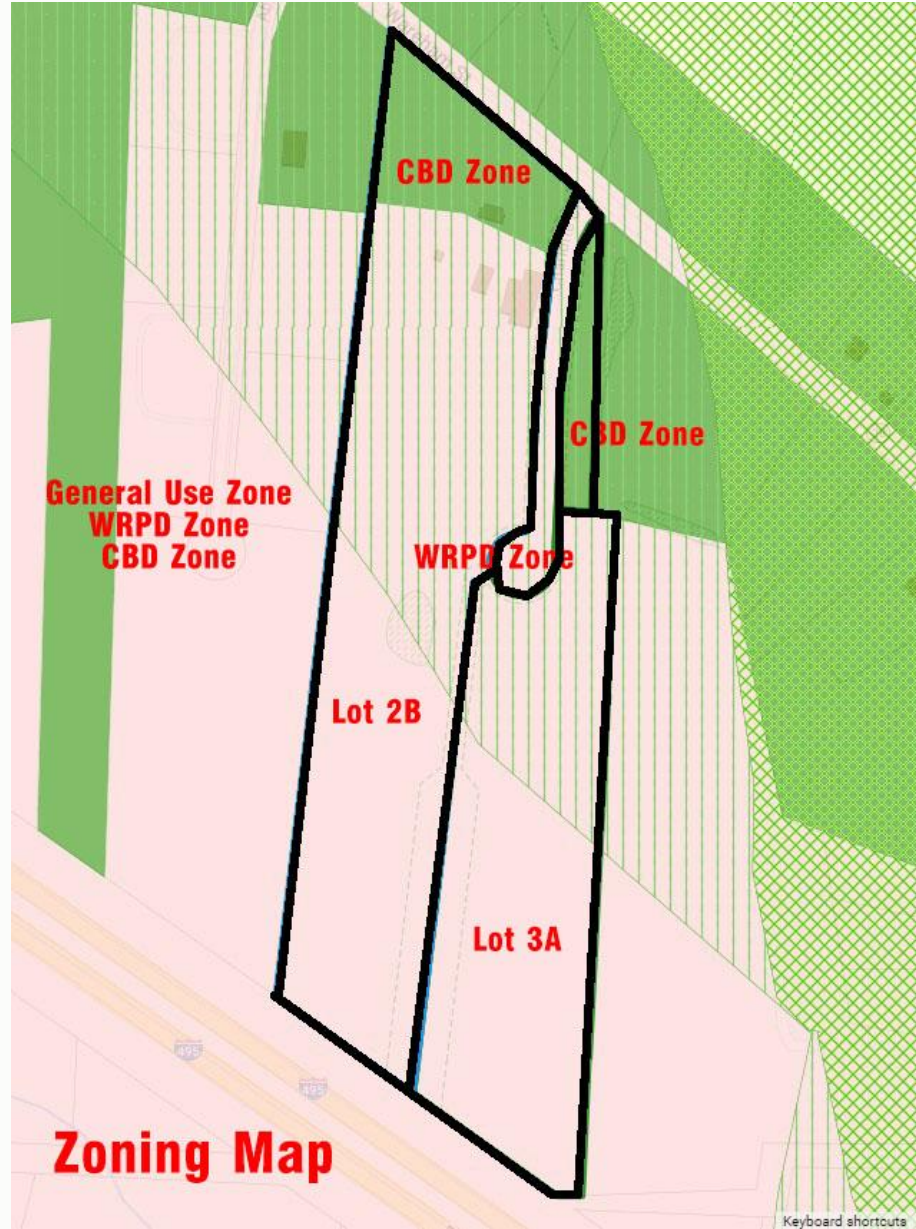


Neighborhood

370 Wareham St - Rte 28 - Middleboro, MA



Assessor



Zoning - General Use/WRPD/CBD

370 Wareham St - Rte 28 - Middleboro, MA



370 Wareham St - Rte 28 - Middleboro, MA



370 Wareham St - Rte 28 - Middleboro, MA



370 Wareham St - Rte 28 - Middleboro, MA



370 Wareham St - Rte 28 - Middleboro, MA



370 Wareham St - Rte 28 - Middleboro, MA



370 Wareham St - Rte 28 - Middleboro, MA

HARTEL COMMERCIAL REAL ESTATE
FALMOUTH - QUINCY

230 Jones Road
Suite 6
Falmouth MA 02540

Greg Hartel
617-256-3169
Greg@HartelRealty.com

Jody Shaw
508-566-3556
Jody@HartelRealty.com

Main Office
508-444-0172
www.HartelRealty.com

Contacts

***DISCLAIMER:** ALL INFORMATION CONTAINED HEREIN WAS RESEARCHED AND OBTAINED BY SOURCES DEEMED TO BE RELIABLE. WE MAKE NO REPRESENTATION OR WARRANTIES OF ANY KIND DUE TO THE ACCURACY CONTAINED WITHIN THIS LISTING. PLEASE CONDUCT YOUR OWN RESEARCH OF THE PROPERTY TO VERIFY ANY AND ALL INFORMATION. WE ARE NOT RESPONSIBLE FOR ANY INFORMATION WHICH IS RELIED UPON WITHOUT FURTHER DUE DILIGENCE AND INVESTIGATION.