



HARTEL COMMERCIAL REAL ESTATE

Strategic Real Estate Services

**188 Nathan Ellis Highway, aka Route 151
Falmouth ~ MA**



- * LOCATED ADJACENT TO VERY SUCCESSFUL CAPE COD PET RESORT
- * CURRENT USE - WELL ESTABLISHED VETERINARY ANIMAL HOSPITAL
 - * LEASE IN PLACE UNTIL MAY 2019
- * 5,859± SF - BUILT 1972 - ZONED AGAA - INCLUDES 2ND FLOOR APARTMENT
- * LOCATED ON HEAVILY TRAVELED ROUTE 151 - TRAFFIC COUNT (2018) 28,012 CARS/DAY
- * REDEVELOPMENT & EXPANSION OPPORTUNITIES - LAND CLEARED IN REAR
- * SALE REQUIRES CONDOMINIZATION - **OPTION TO LEASE AVAILABLE - INQUIRE FOR PRICING**

NEW PRICE - Offered at \$800,000



HARTEL COMMERCIAL REAL ESTATE

230 Jones Road
Suite 6
Falmouth MA 02540

40 Willard Street
Suite 207
Quincy MA 02169

Greg Hartel
617-256-3169
Greg@HartelRealty.com

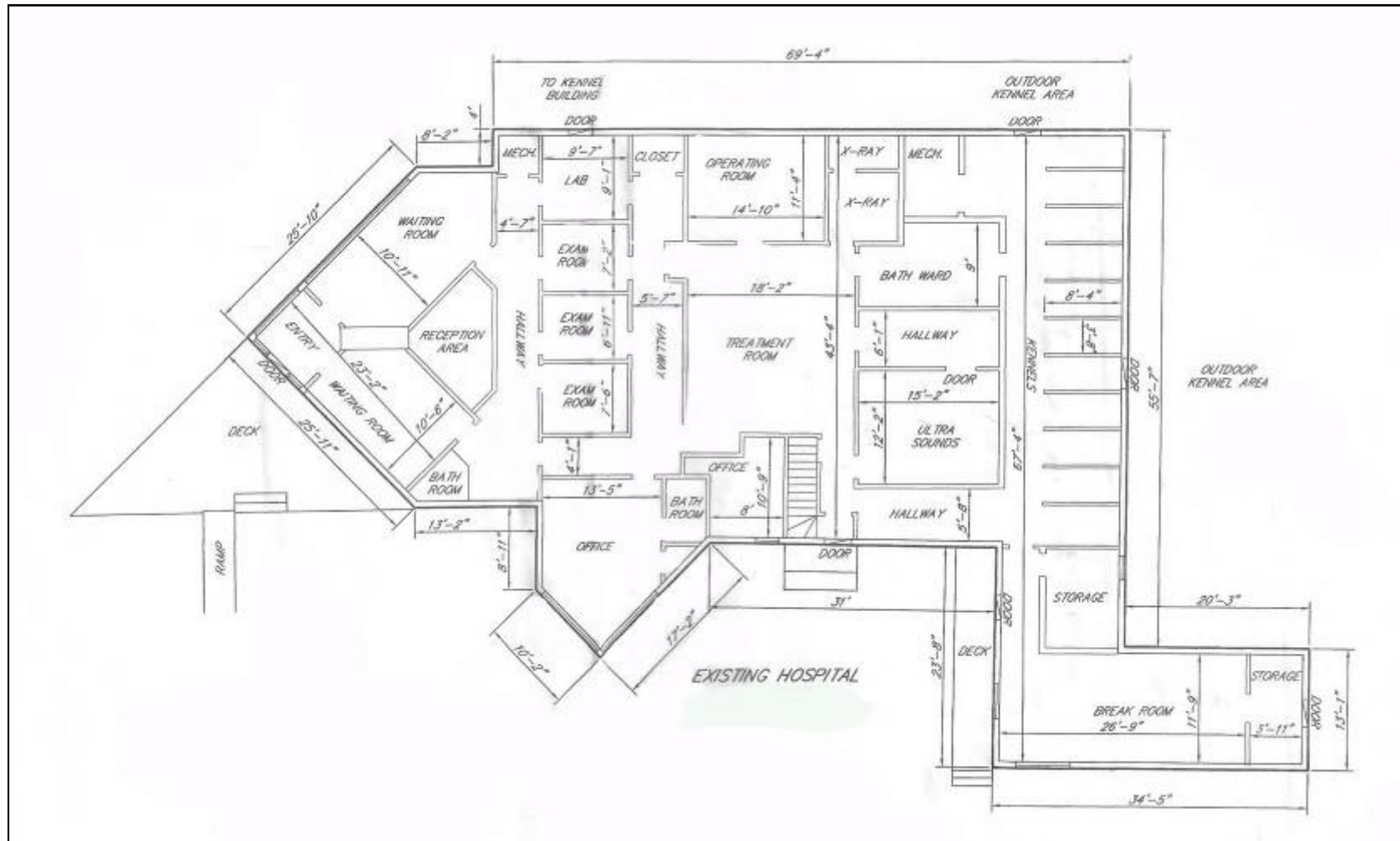
Jody Shaw
508-566-3556
Jody@HartelRealty.com

Main Office
508-444-0172
www.HartelRealty.com



HARTEL COMMERCIAL REAL ESTATE

Strategic Real Estate Services



Animal Hospital - Floorplan



HARTEL COMMERCIAL REAL ESTATE

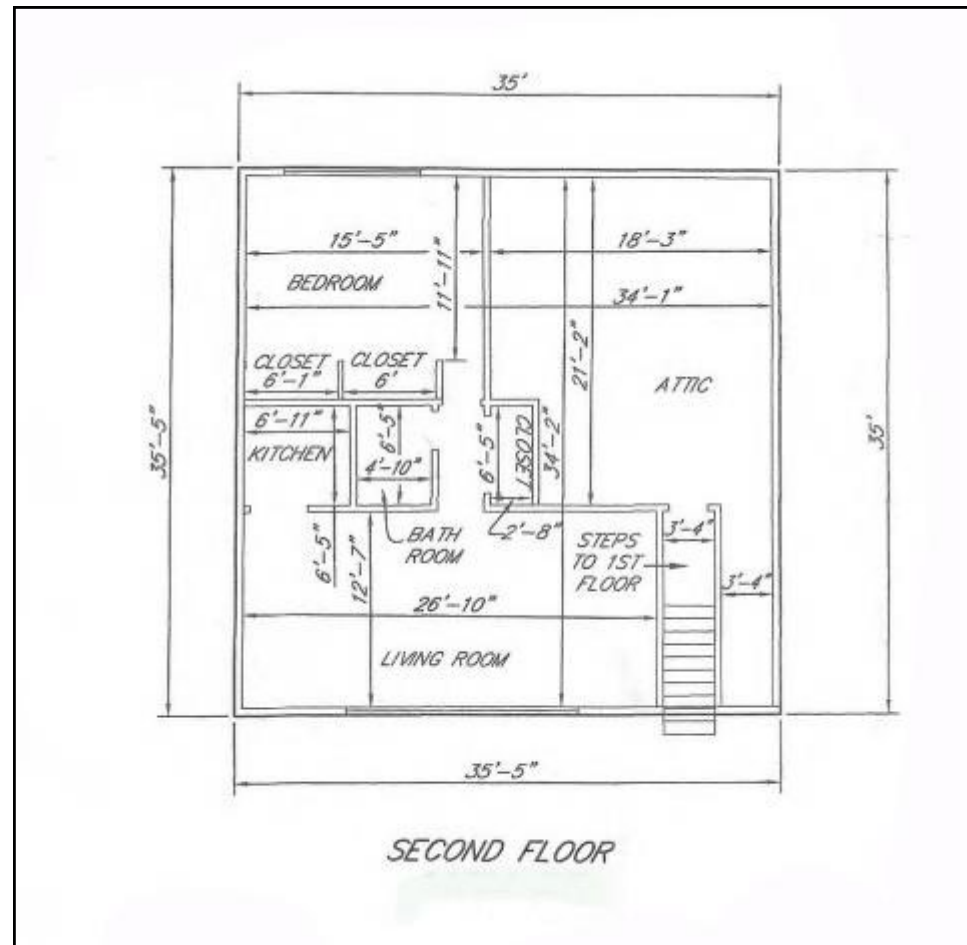
230 Jones Road
Suite 6
Falmouth MA 02540

40 Willard Street
Suite 207
Quincy MA 02169

Greg Hartel
617-256-3169
Greg@HartelRealty.com

Jody Shaw
508-566-3556
Jody@HartelRealty.com

Main Office
508-444-0172
www.HartelRealty.com



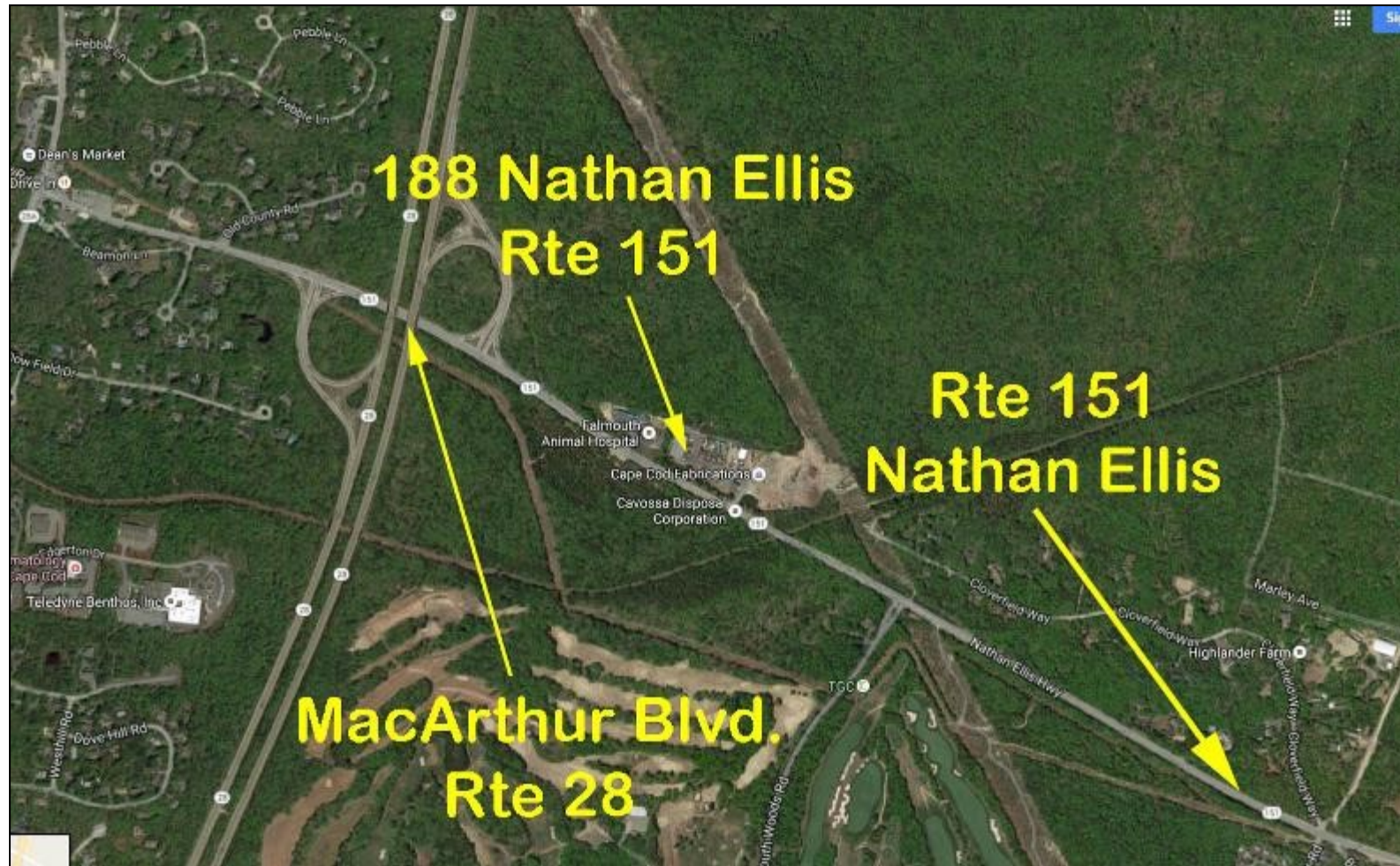
2nd Floor Apartment - Floorplan





HARTEL COMMERCIAL REAL ESTATE

Strategic Real Estate Services



Satellite View



HARTEL COMMERCIAL REAL ESTATE

230 Jones Road
Suite 6
Falmouth MA 02540

40 Willard Street
Suite 207
Quincy MA 02169

Greg Hartel
617-256-3169
Greg@HartelRealty.com

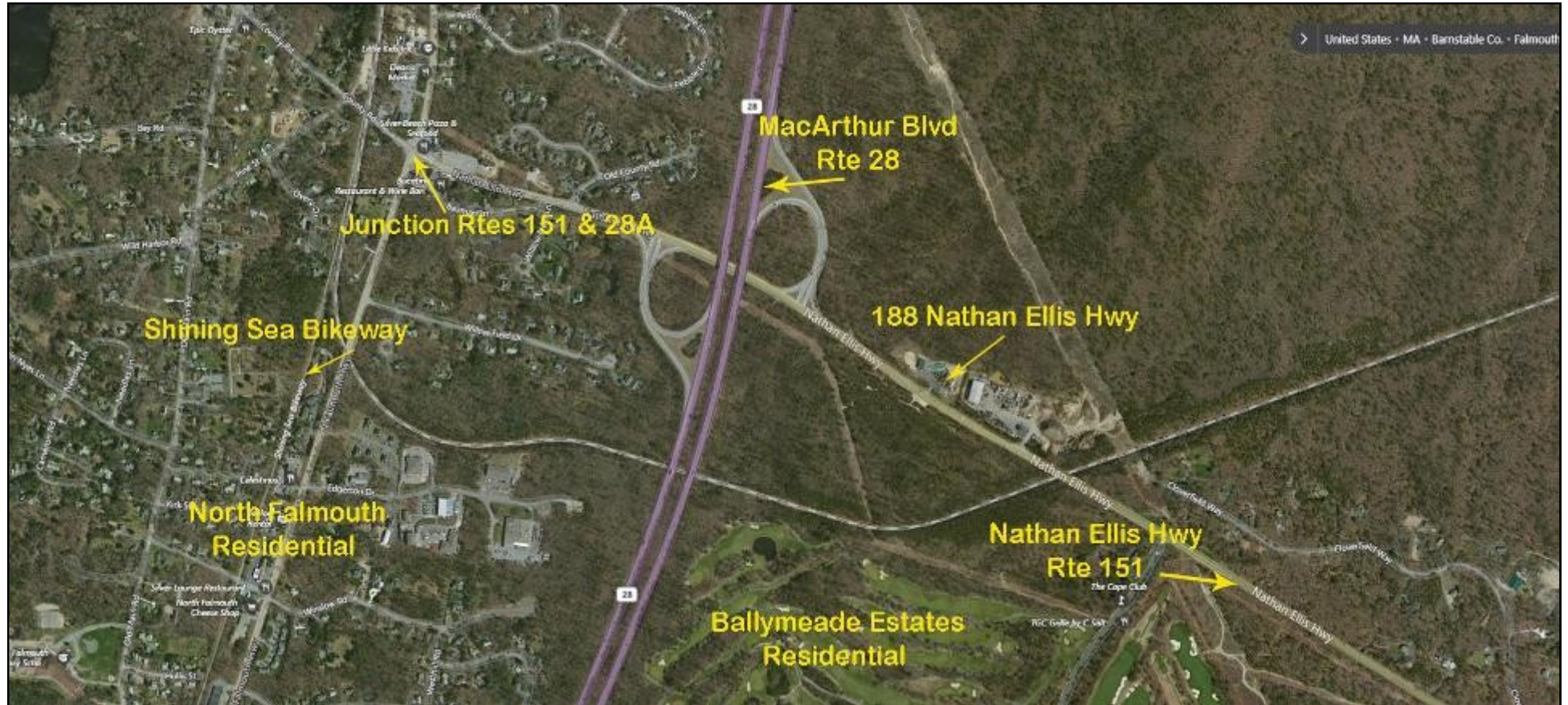
Jody Shaw
508-566-3556
Jody@HartelRealty.com

Main Office
508-444-0172
www.HartelRealty.com



HARTEL COMMERCIAL REAL ESTATE

Strategic Real Estate Services



Neighborhood View



HARTEL COMMERCIAL REAL ESTATE

230 Jones Road
Suite 6
Falmouth MA 02540

40 Willard Street
Suite 207
Quincy MA 02169

Greg Hartel
617-256-3169
Greg@HartelRealty.com

Jody Shaw
508-566-3556
Jody@HartelRealty.com

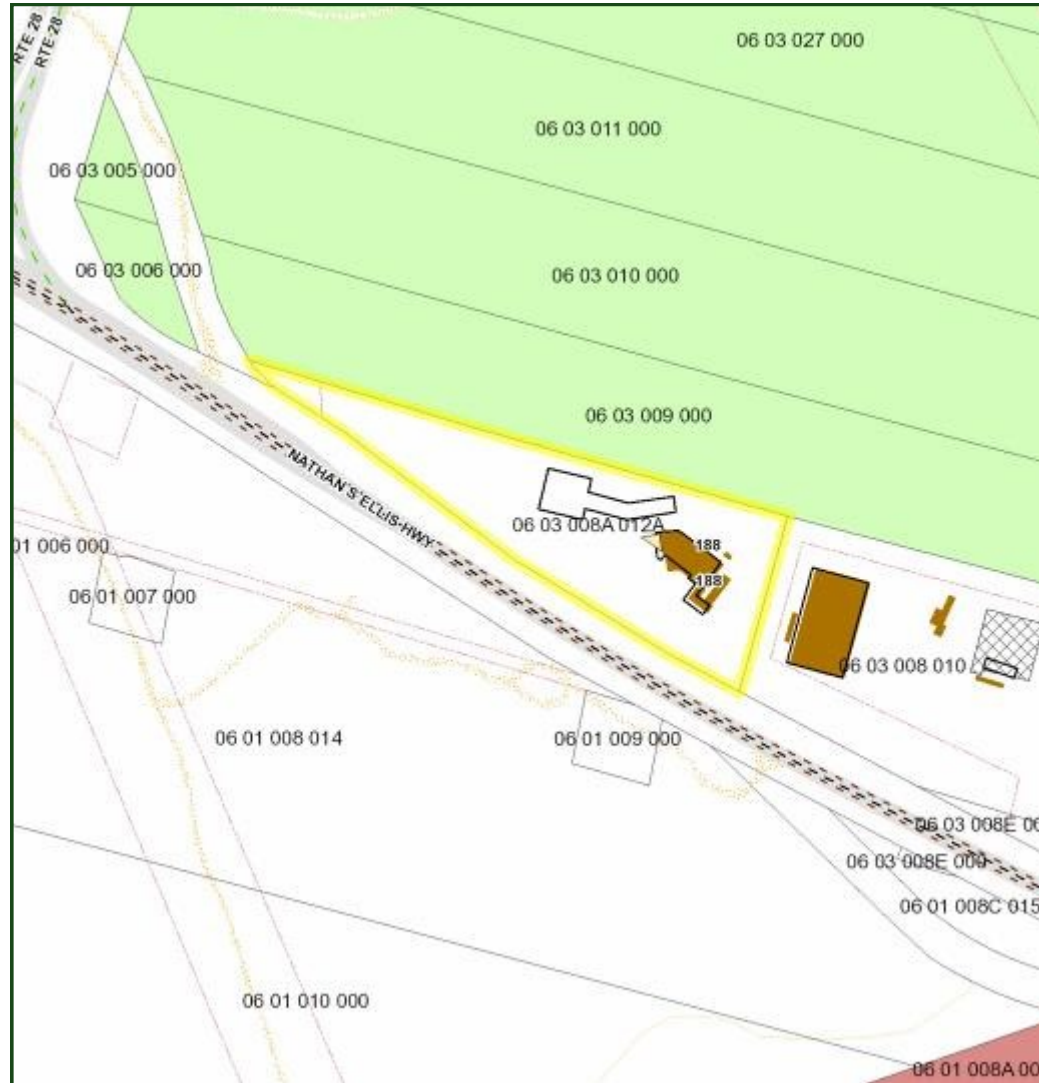
Main Office
508-444-0172
www.HartelRealty.com



HARTEL COMMERCIAL REAL ESTATE

Strategic Real Estate Services

Assessor Map





Zoning Map





HARTEL COMMERCIAL REAL ESTATE

Strategic Real Estate Services

Property Description

Intersecting North & East Falmouth, this unique property is located in the northern part of the town of Falmouth and located in a heavily traveled, prime location close to shopping, beaches, and other town amenities. Both villages have the convenience of a rolling rural countryside. Route 28A, is adjacent to the Rte 151 location and has the infamous Shining Sea Bikeway, which is 7± miles of paved bike/walkway from N Falmouth to Woods Hole. East Falmouth runs the length of Route 151 and is also a desirable area. The immediate neighborhood is comprised of a mix of residential homes and local business and neighbors 36 Holes of Championship Golf within the Ballymeade Estates Community. The area is expanding yet keeping in character and charm of a small village.

188 Nathan Ellis Highway is located just off the Rte 151 exit of MacArthur Blvd., aka Rte 28 which runs from the Bourne Bridge to Falmouth and along through all towns and up to Provincetown. The site consists of two buildings with complimentary uses. One is an animal hospital and the other is a pet resort/boarding kennel. The buildings may be separately run, but they are such good companion uses.

Current veterinary hospital has lease in place to May 2019 and is a well established veterinary hospital. There is a separate residential one bedroom apartment on the second floor with 1,170± SF. The site is serviced by a denitrification septic system and well water which are tested yearly.



Front View



Signage



Rear View



HARTEL COMMERCIAL REAL ESTATE

Strategic Real Estate Services



Front



Front Entrance



Rear Cleared Land



Reception/Waiting Room



Back Hall



Office



Back Hall



Exam Room



Triage



HARTEL COMMERCIAL REAL ESTATE

Strategic Real Estate Services



X-Ray



Surgery



Rear Exterior Play Area



Employee Break Room



Entrance to 2nd Floor Apartment



Interior Apartment



Grounds