

FOR LEASE

Professional Office Space

\$400/Month Each
or

\$750/Month Combined
Includes Utilities

Offered by:



Hartel Commercial Real Estate

230 Jones Road
Suite 6
Falmouth, MA

40 Willard Street
Suite 207
Quincy, MA

Greg Hartel
617-256-3169

Greg@HartelRealty.com

Gretchen Halloran
508-524-9080

Gretchen@HartelRealty.com

Main Office:
508-444-0172

www.HartelRealty.com



210 WINTER STREET SUITES 302A & 302B WEYMOUTH, MA

PROPERTY SYNOPSIS

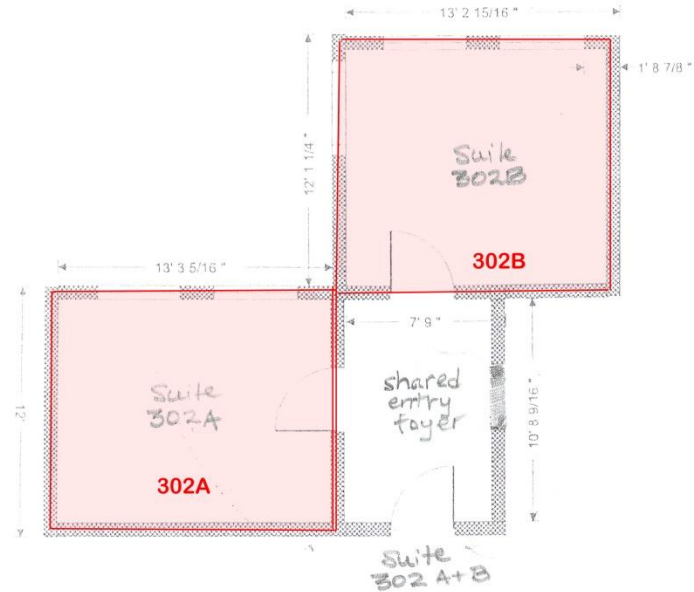
- Address
210 Winter Street
Suites 302A & 302B
Weymouth, MA
- Lease / Terms
Single Offices - \$400/Month Each
Combined at \$750/Month
Utilities Included
- Common Area
Shared Wait Area &
Conference Room
- Baths
2 Shared in Common Hall
- Town/Well Water
Municipal
- Town/Private Septic
Municipal
- Zoning
B1
- Parking
On-Site

AREA & COMPLEX OVERVIEW

- The Town of Weymouth is located twelve miles southeast from Boston's business district in the southeastern section of Massachusetts. There is access to Routes 3, 53 and 18 in the immediate area. Weymouth is a mature community compared to other municipalities in that it has been almost completely developed in terms of land area. This development, however, will not prevent the redevelopment of sites with new uses. Weymouth is bordered on the west by Braintree and Holbrook, south by Abington and Rockland, east by Hingham and north by North Weymouth and Massachusetts Bay.
- 210 Winter Street is located in a mixed use area of large and small retail, scattered industrial uses, medical facilities, eating establishments intermingled with residential uses. It is strategically located close to major highways and heavily travelled roads. In the center of the Winter Street and Winter Court triangle, it is accessed by curb cuts in both the front and rear.
- Suites contains single office suites accessed by the front and rear of the building via a common staircase. There is ample parking from the front and rear as well. This space has only two suites for lease. Lease one at \$400/Month or these two suites may be combined at \$750/Month. There is a shared wait room and shared conference room.

Floor Plan

"EXHIBIT A"



Photographs



GIS MAP



SATELLITE

