

210 WINTER STREET, SUITE 104 WEYMOUTH, MA



Offered by:



Hartel Commercial Real Estate

230 Jones Road | 40 Willard Street
Suite 6 | Suite 207
Falmouth, MA | Quincy, MA

Greg Hartel
617-256-3169
Greg@HartelRealty.com

Gretchen Hartel
508-524-9080
Gretchen@HartelRealty.com

FOR LEASE

950± SF ~
Professional
Office Space

\$1,425/Mo
Gross

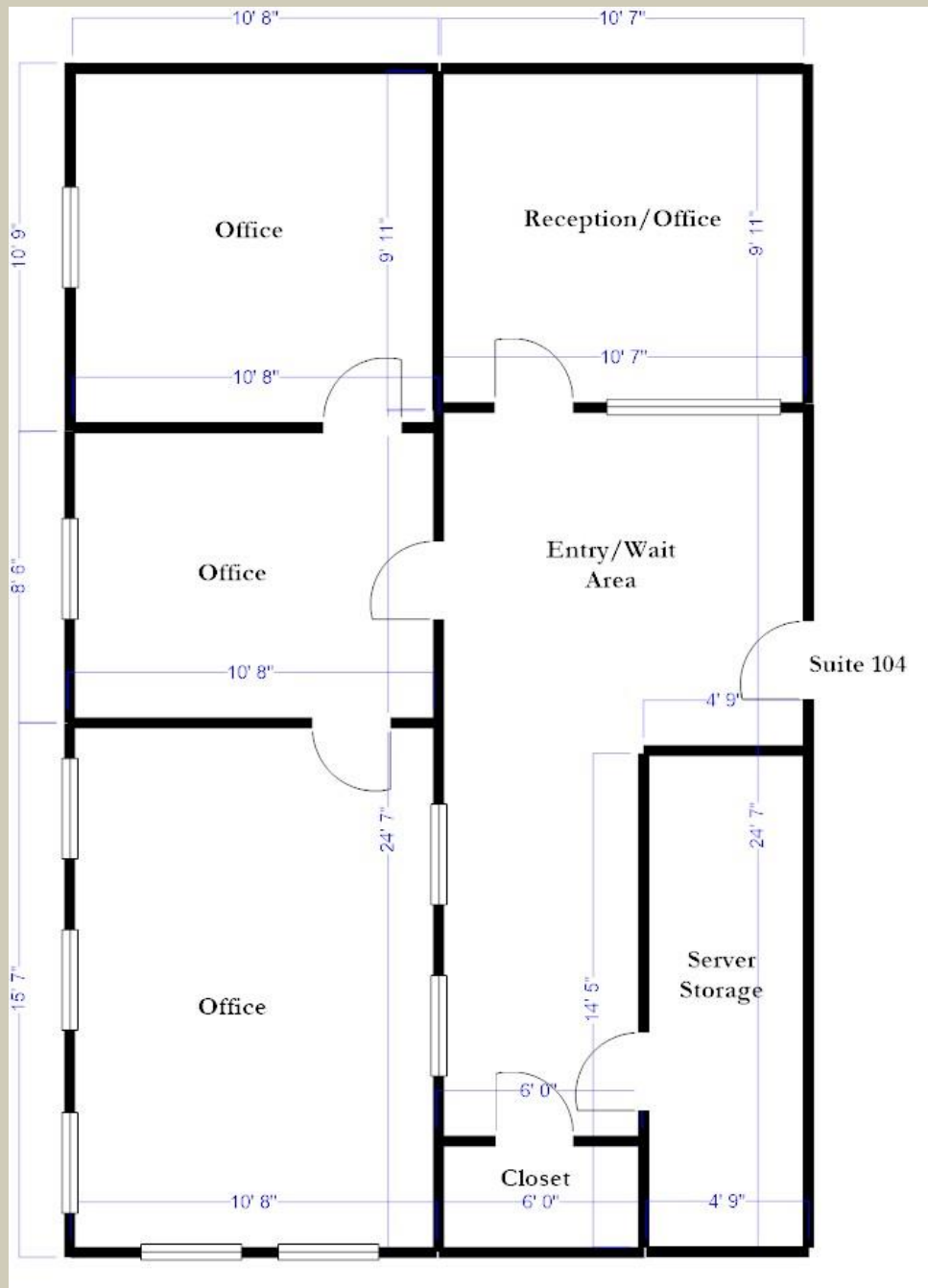
Main Office:
508-444-0172
www.HartelRealty.com

PROPERTY SYNOPSIS

- **Address** 210 Winter Street
Suite 104
Weymouth, MA
- **Suite Size** 950± SF
- **Lease/Terms** \$1,425/Mo Gross including Utilities
- **Baths** 2 Shared
- **Town/Well Water** Municipal
- **Town/Private Septic** Municipal
- **Zoning** B-1
- **Parking** On-Site

AREA & COMPLEX OVERVIEW

- The Town of Weymouth is located twelve miles southeast from Boston's business district in the southeastern section of Massachusetts. There is access to Routes 3, 53 and 18 in the immediate area. Weymouth is a mature community compared to other municipalities in that it has been almost completely developed in terms of land area. This development, however, will not prevent the redevelopment of sites with new uses. Weymouth is bordered on the west by Braintree and Holbrook, south by Abington and Rockland, east by Hingham and north by North Weymouth and Massachusetts Bay.
- 210 Winter Street is located in a mixed use area of large and small retail, scattered industrial uses, medical facilities, eating establishments intermingled with residential uses. It is strategically located close to major highways and heavily travelled roads. In the center of the Winter Street and Winter Court triangle, it is accessed by curb cuts in both the front and rear.
- Suite 104 contains 950± SF of office space accessed by the front and rear of the building via a common staircase. There is ample parking from the front and rear as well. This space is currently professional office space with a large reception/room and two offices.



SUITE LAYOUT

950 SF

GIS MAP



SATELLITE



PHOTOGRAPHS

