

# 210 WINTER STREET, SUITE 301 WEYMOUTH, MA



## FOR LEASE

Professional  
Single Office  
Suites

\$475 - \$595  
Per Month

Offered by:



**Hartel Commercial Realty**

230 Jones Road | 40 Willard Street  
Suite 6 | Suite 207  
Falmouth, MA | Quincy, MA

Greg Hartel  
617-256-3169  
[Greg@HartelRealty.com](mailto:Greg@HartelRealty.com)

Gretchen Hartel  
508-524-9080  
[Gretchen@HartelRealty.com](mailto:Gretchen@HartelRealty.com)

Main Office:  
508-444-0172  
[www.HartelRealty.com](http://www.HartelRealty.com)

# PROPERTY SYNOPSIS

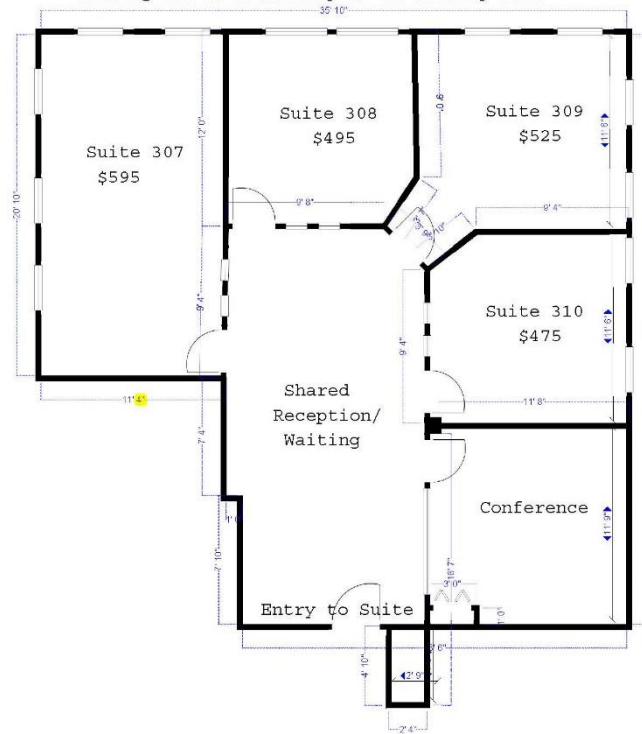
- **Address** 210 Winter Street  
Suite 307-310  
Weymouth, MA
- **Suite Shares** Reception Area & Conference Room
- **Lease/Terms** \$475 - \$595/Month
- **Baths** 2 Shared
- **Town/Well Water** Municipal
- **Town/Private Septic** Municipal
- **Zoning** B-1
- **Parking** On-Site

# AREA & COMPLEX OVERVIEW

- The Town of Weymouth is located twelve miles southeast from Boston's business district in the southeastern section of Massachusetts. There is access to Routes 3, 53 and 18 in the immediate area. Weymouth is a mature community compared to other municipalities in that it has been almost completely developed in terms of land area. This development, however, will not prevent the redevelopment of sites with new uses. Weymouth is bordered on the west by Braintree and Holbrook, south by Abington and Rockland, east by Hingham and north by North Weymouth and Massachusetts Bay.
- 210 Winter Street is located in a mixed use area of large and small retail, scattered industrial uses, medical facilities, eating establishments intermingled with residential uses. It is strategically located close to major highways and heavily travelled roads. In the center of the Winter Street and Winter Court triangle, it is accessed by curb cuts in both the front and rear.
- Suites 307-310 contain four separate single offices with shared reception area and conference room. The spaces are accessed by the front and rear of the building via a common staircase. There is ample parking from the front and rear as well. Offered for \$475 - \$595 / Month.

# SUITE LAYOUT

210 WINTER STREET - 3rd Floor Suite  
Pricing and Availability as of January 2020



# GIS MAP



# SATELLITE

