

210 WINTER STREET, SUITE 301 WEYMOUTH, MA



FOR LEASE

Professional
Single Office
Suites

\$475 - \$595
Per Month

Offered by:



Hartel Commercial Real Estate

230 Jones Road | 40 Willard Street
Suite 6 | Suite 207
Falmouth, MA | Quincy, MA

Greg Hartel
617-256-3169
Greg@HartelRealty.com

Gretchen Hartel
508-524-9080
Gretchen@HartelRealty.com

Main Office:
508-444-0172
www.HartelRealty.com

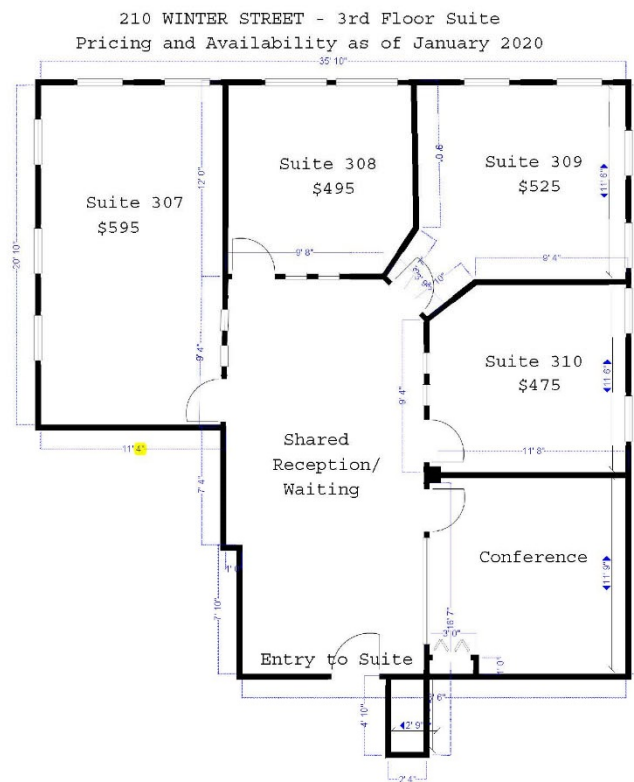
PROPERTY SYNOPSIS

■ Address	210 Winter Street Suite 307-310 Weymouth, MA
■ Suite Shares	Reception Area & Conference Room
■ Lease/Terms	\$475 - \$595/Month
■ Baths	2 Shared
■ Town/Well Water	Municipal
■ Town/Private Septic	Municipal
■ Zoning	B-1
■ Parking	On-Site

AREA & COMPLEX OVERVIEW

- The Town of Weymouth is located twelve miles southeast from Boston's business district in the southeastern section of Massachusetts. There is access to Routes 3, 53 and 18 in the immediate area. Weymouth is a mature community compared to other municipalities in that it has been almost completely developed in terms of land area. This development, however, will not prevent the redevelopment of sites with new uses. Weymouth is bordered on the west by Braintree and Holbrook, south by Abington and Rockland, east by Hingham and north by North Weymouth and Massachusetts Bay.
- 210 Winter Street is located in a mixed use area of large and small retail, scattered industrial uses, medical facilities, eating establishments intermingled with residential uses. It is strategically located close to major highways and heavily travelled roads. In the center of the Winter Street and Winter Court triangle, it is accessed by curb cuts in both the front and rear.
- Suites 307-310 contain four separate single offices with shared reception area and conference room. The spaces are accessed by the front and rear of the building via a common staircase. There is ample parking from the front and rear as well. Offered for \$475 - \$595 / Month.

SUITE LAYOUT



GIS MAP



SATELLITE

